

**CHIPOLA
JUNIOR
COLLEGE**

**MARIANNA
FLORIDA**

**GENERAL
CATALOG**

ANNOUNCEMENTS

1964-1965

**FLA
R
LD6501
C45C
1964-65
C2**

CHIPOLA JUNIOR COLLEGE

MARIANNA, FLORIDA

A public junior college supported by the State of Florida and
the Counties of Jackson, Calhoun, and Washington.



GENERAL CATALOG

ANNOUNCEMENTS FOR 1964-1965

Accredited by —

Southern Association of Colleges and Secondary Schools

Member —

American Association of Junior Colleges

Florida Association of Colleges and Universities

Florida Association of Public Junior Colleges

Southern Association of Junior Colleges

F/a
R
LD6501
CH5
1964-65
c2

CALENDAR 1964-1965

Summer Session, 1964

- June 9 — Tuesday — Pre-registration testing and orientation for new or entering students (by appointment), 8:15 A.M. — 4:00 P.M.
- June 10 — Wednesday — Registration for the first term of summer session, 8:00 A.M. to 4:00 P.M.
- June 11 — Thursday — Classes begin on regular schedule; late registration fee required for all late registrants.
- June 12 — Friday — Last day for first term registration; last day for changing class schedules.
- July 1 — Wednesday — First term of summer session ends; registration for second term of summer session, 8:00 A.M. to 4:00 P.M.
- July 2 — Thursday — Second term classes begin on regular schedule; late registration fee required for all late registrants.
- July 3 — Friday — Last day for second term registration; last day for changing class schedules.
- July 22 — Wednesday — Second term of summer session ends.

Fall Semester, 1964-65

- July 3 — Friday — Pre-registration testing and orientation for new or entering students (by appointment), 8:15 A.M. to 4:00 P.M.
- July 17 — Friday — Pre-registration testing and orientation for new or entering students (by appointment), 8:15 A.M. to 4:00 P.M.
- July 31 — Friday — Pre-registration testing and orientation for new or entering students (by appointment), 8:15 A.M. to 4:00 P.M.
- August 7 — Friday — Pre-registration testing and orientation for new or entering students (by appointment), 8:15 A.M. to 4:00 P.M.
- August 24 — Monday — Last day for all admissions materials for new or entering students to be in the Registrar's office and last day to take pre-registration tests. Any applicant who applies after this date or who has not completed all admission requirements and pre-registration testing will be considered a late registrant and assessed a late registration fee of \$5.00.
- August 25 — Tuesday — Individual counseling and orientation for new or entering students, by appointment only, 8:00 A.M. to 4:00 P.M.
- August 26 — Wednesday — Individual counseling and orientation for new or entering students, by appointment only, 8:00 A.M. to 4:00 P.M.
- August 27 — Thursday — Registration for all students, by appointment only, 8:00 A.M. to 4:00 P.M.
- August 28 — Friday — Registration for all students, by appointment only, 8:00 A.M. to 4:00 P.M.
- August 31 — Monday — Classes begin on regular schedule; late registration fee required for all late registrants.
- September 7 — Monday — Holiday.
- September 8 — Tuesday — Last day for fall semester registration; last day for changing class schedules.

- October 2 — Friday — Student holiday for F.E.A. meeting for teachers.
- October 13 — Tuesday — Unsatisfactory grade reports due in Office of Director of Student Personnel Services, 4:00 P.M.
- October 23 — Friday — Last date on which a student may receive permission to drop or withdraw from any course without penalty.
- October 30 — Friday — Mid-semester progress grades due in Registrar's office, 4:00 P.M.
- November 25 — Wednesday — Thanksgiving holidays begin, 4:00 P.M.
- November 30 — Monday — Classes resume on regular schedule.
- December 18 — Friday — Christmas holidays begin, 12:00 Noon.
- January 4 — Monday — Classes resume on regular schedule.
- January 11 — Monday — Final examinations begin.
- January 21 — Thursday — Fall semester ends; final grades due in Registrar's office, 4:00 P.M.

Spring Semester, 1965

- January 22 — Friday — Last day for all admission materials for new or entering students to be in the Registrar's office and last day to take pre-registration tests. Any applicant who applies after this date or who has not completed all admission requirements and pre-registration testing will be considered a late registrant and assessed a late registration fee of \$5.00.
- January 25 — Monday — Registration for all students, 8:00 A.M. to 4:00 P.M.
- January 26 — Tuesday — Classes begin on regular schedule; late registration fee required for all late registrants.
- February 2 — Tuesday — Last day for spring semester registration; last day for changing class schedules.
- March 8 — Monday — Unsatisfactory grade reports due in Office of Director of Student Personnel Services, 4:00 P.M.
- March 19 — Friday — Last date on which a student may receive permission to drop or withdraw from any course without penalty.
- March 26 — Friday — Mid-semester progress grades due in Registrar's office, 4:00 P.M.
- (Two days to be announced) — Spring holidays.
- May 21 — Friday — Final examinations begin.
- May 30 — Sunday — Baccalaureate services.
- June 2 — Wednesday — Spring semester ends; final grades due in Registrar's office, 4:00 P.M.
- June 4 — Friday — Commencement exercises, 8:00 P.M.

ADMINISTRATION

DISTRICT AND COUNTY ADMINISTRATION

Superintendents of Public Instruction

J. D. Milton, Jackson County, Marianna, Florida
Lewis Bailey, Calhoun County, Blountstown, Florida
Colly V. Williams, Washington County, Chipley, Florida

Board of Public Instruction, Jackson County

R. B. Beall, Sr., Chairman, Marianna, Florida
E. D. Patterson, Jr., Graceville, Florida
H. D. Hagler, Malone, Florida
Hubert Brock, Cottondale, Florida
B. E. Charles, Sneads, Florida

Chipola Junior College Advisory Committee

Jackson County

T. K. Snipes, Chairman, Malone, Florida
R. B. Beall, Sr., Marianna, Florida
W. O. Wells, Alford, Florida

Calhoun County

Emory Bridges, Blountstown, Florida
W. G. Dean, Altha, Florida
L. E. Porter, Blountstown, Florida

Washington County

Franklin P. Evans, Caryville, Florida
Walker Hughen, Chipley, Florida
D. J. Cook, Vernon, Florida

COLLEGE ADMINISTRATION

Ned LeRoy Haven, Ed. D.
President

G. W. Allen, Jr., M. A.
Dean of the College

W. C. Burdeshaw, M. S.
Director of Adult Division

James H. McGill, M. S.
Director of Campus Services

Eva J. Dixon, M. A.
Director of Library Services

Grady E. Moates, M. S.
Director of Student Personnel
Services

Milton H. Johnson, M. S.
Director of Athletics

C. D. West, Jr., M. A.
Registrar and Admissions Officer

Division Chairmen

Earl E. Hamilton, M. A. E.
The Social Sciences

Milton H. Johnson, M. S.
Health and Physical Education

Albert S. Johnson, M. S.
Natural Science and Mathematics

Richard Earl Carroll, M. S.
English and Humanities

Other Personnel

Grapel Purser Bursar
Rebecca S. McGill Secretary to the President
Mattie Lou Brogdon Secretary to the Dean
Loraine White Secretary to the Registrar
Jean Clark Sims Library Technician
Elizabeth Smith Clerical Assistant
Ann Golden Receptionist
Codie Hartzog Manager, Cafeteria
Lela Hart Assistant Manager, Cafeteria
Amos Hill Assistant in Maintenance

FACULTY

Dates following names indicate initial employment by Chipola Junior College.

- Ned LeRoy Haven (1955-60, 1961) President
B.A., M.Ed., Ed.D., University of Florida
- Shirley F. Adkison (1964) English and Speech
B.A., Lawrence College
M.A., Michigan State University
- G. W. Allen, Jr. (1948) Dean of the College
B.S., Troy State College
M.A., University of Alabama
- Patricia Ann Bedsole (1961) Mathematics
B.A., Judson College
M.A., Louisiana State University
- Theodore H. Brittan (1963) Mathematics
B.S., U. S. Naval Academy
M. S., Florida State University
- W. C. Burdeshaw (1954) Director of Adult Division
B.S., Troy State College
M.S., Florida State University
- Billy E. Carmichael (1962) Natural Science
B.S., Troy State College
M.A., George Peabody College for Teachers
- Richard Earl Carroll (1957-58, 1960) English
B.S., M.S., Florida State University
- *James H. Clinton (1956) Natural Science
B.S., M.S., University of Illinois
- *Ramon L. Delgado (1962) Speech and English
B.A., Stetson University
M.A., Baylor University
- Eva J. Dixon (1955) Director of Library Services
A.B., M.A., University of Florida
- James Daniel Driskell (1961) Social Science
A.B., Howard College
M.A., Florida State University
- John E. Flynn (1964) Humanities
B.S., Troy State College
M.Ed., Auburn University
M.A., Florida State University
- Francis B. Gaines (1958) English and Humanities
B.A., M.Ed., University of Florida
- Earl E. Hamilton (1952) Social Science and Education
A.B., M.A.E., University of Florida

- Lynn F. Hicks (1963) English
B.A.E., University of Florida
M.A., Florida State University
- Kenneth R. Hilyer (1962) Physical Education
B.S., Troy State College
M.Ed., Auburn University
- Bonnie Holt (1956) Physical Education
B.S., Mississippi Southern University
- Merle Z. Houston (1963) Circulation Librarian
B.S., Troy State College
M.Ed., Auburn University
- Joseph F. Hull, Jr. (1956) Social Science
A.B., M.A., University of Alabama
- Albert S. Johnson (1950) Natural Science
B.S., Indiana State College
M.S., University of Illinois
- Milton H. Johnson (1961) Physical Education
B.S., Livingston State College
M.S., Florida State University
- Thomas C. Jones (1963) Natural Science
B.S., University of Florida
M.P.H., University of North Carolina
- Drew Lambert (1961) Natural Science
B.S., Livingston State College
M.S., Auburn University
- James A. Lewis (1957) Business
B.S., M.S., Florida State University
- Albert E. Lightfoot (1963) English and Speech
A.B., Stetson University
Th.M., Southern Baptist Seminary
- James H. McGill (1952) Director of Campus Services
B.S., M.S., Auburn University
- Jay L. Mitchell (1962) Natural Science
B.S., Troy State College
M.S., Florida State University
- Grady E. Moates (1957) Director of Student Personnel Services
Th.B., New Orleans Baptist Theological Seminary
M.S., Florida State University
- Sidney Mordes (1959) Social Science
B.A., University of Miami
M.S., Florida State University
- E. Don Murray (1958) Art
B.A., University of Tennessee
M.F.A., M.Ed., University of Florida
- Melvin C. Neeley (1956) Psychology
B.S., M.S., Auburn University
- Larry R. Neison (1960) Music
A.B., Asbury College

GENERAL INFORMATION

HISTORY

Chipola Junior College was founded in 1947 and operated for one year as a private educational institution.

Florida's Minimum Foundation Law, passed in 1947, included provisions for public support of junior colleges. Under the provisions of this law, a junior college district consisting of Jackson, Calhoun, and Washington, was organized. The junior college district applied for approval of the college to operate as a public institution with financial support from the three counties and the State of Florida. This approval was granted by the State Board of Education, and Chipola Junior College became a public institution effective September 1, 1948.

A milestone in the history of Chipola Junior College was the move, in 1953, from its original location at the former Marianna Army Air Base to a new campus located on the northern city limits of Marianna. The College was opened on its new site in temporary buildings. College officials planned immediately for new facilities and a new physical plant. The first permanent structure, used as a combination administration, library, and classroom building, was completed and occupied in 1954. Four additional permanent buildings were completed and occupied in 1957; two more were completed and ready for occupancy in 1958. A technical building was completed and occupied during the spring of 1962. Additions to the Administration, Library, and Technical Buildings were completed in 1963.

Dormitories designed to house Chipola students are now under construction by the Chipola Dormitory Authority on land adjacent to the southeastern part of the campus.

Chipola's physical growth has been matched by a steady growth in student enrollment and faculty. Evidence of growth with regard to official recognition by other institutions of higher learning came in 1957 when Chipola Junior College was accepted into membership and fully accredited by the Southern Association of Colleges and Secondary Schools.

PHYSICAL PLANT

The campus is a beautifully wooded and landscaped tract of seventy acres located on the northern limits of the City of Marianna. Administrative, instructional and recreational facilities consist of ten permanent buildings of brick and masonry construction.

The Administration Building, completed in 1957, houses all administrative offices, a faculty lounge, faculty offices and six class rooms.

The Library Building houses 16,000 volumes (excluding general reference books and periodicals), librarians' offices, work and storage rooms, and general reading rooms. This building was completed and occupied in 1958. An addition that doubled seating capacity was completed in 1963.

The oldest structure on the campus is the Social Science Building, first occupied in 1954. Prior to 1957 this building housed administrative offices, the library and class rooms. It is now used solely for classrooms and faculty offices.

Laboratories for Biological Sciences, Chemistry, and Physics are in the Science Building, completed in 1957. Here are also located classrooms for all mathematics and natural science classes, a teaching auditorium, and faculty offices.

Construction of the Field House was started in 1954 and completed in 1957. Complete facilities for physical education for both men and women are included. The Field House also is utilized for both intramural and intercollegiate sports. All home basketball games are played here.

- David W. Nicholson (1962) Social Science
B.S., M.S., University of Southern Mississippi
- James S. Pavy (1956) Physical Education
B.S., M.S., Florida State University
- Chester H. Pelt (1948-50, 1954) Sociology and Philosophy
A.B., Atlantic Christian College
M.A., Florida State University
- Frederick B. Peters (1957) Business
B.S., Troy State College
M.A., University of Alabama
- Margaret G. Rath (1962) Drafting and Engineering Graphics
B.S., M.A., Pennsylvania State College
- Mertice Ringer (1961) Reading Clinic
B.A., Blue Mountain College
M.Ed., Mississippi College
- Robert E. Ringer (1960) Natural Science
B.S., Jacksonville State College
M.Ed., Mississippi College
- James T. Sims (1959) Mathematics
B.S., Troy State College
M.S., Florida State University
- Roger B. Solomon (1963) Student Personnel
B.S., East Tennessee State College
B. D., Emory University
M.A., Ed. S., George Peabody College for Teachers
Professional Diploma, Columbia University
- William H. Stabler (1961) Social Science
B.S., Troy State College
M.A., George Peabody College for Teachers
- Rollin R. Stevens (1955) Natural Science
B.S., Utah State University
M.S., Florida State University
- Josephine Story (1955) Mathematics
B.S., M.S., Florida State University
- Mary Frances Stuart (1957) History
B.S., Purdue University
M.A., Florida State University
- Earle C. Taylor (1955) Humanities
A.B., Oglethorpe University
M.S., Florida State University
- *W. I. Throssell (1954) English and Spanish
A. B., University of Washington
M.A.E., Ed.D., University of Florida
- C. D. West, Jr. (1960) Registrar and Admissions Officer
B.S., Troy State College
M.A., George Peabody College for Teachers

*On leave of absence, 1964-65.

Included in the Student Center Building are the Cafeteria, Snack Bar, Student Lounge, and an office and conference room for student government activities. This building was first occupied during the 1957-58 school year.

Adjoining the Student Center is the Auditorium, completed in 1958. This modern building is used for all convocations and other student-faculty assemblies, and dramatic and musical presentations.

The Technical Building, which houses Electronics and Drafting laboratories, Business Education class rooms, and faculty offices, was completed and occupied during the spring of 1962. An addition consisting of two classrooms was completed in 1963.

Dormitories for men and women students are now being constructed adjacent to the campus by the Chipola Dormitory Authority. They are scheduled to be ready for occupancy at the beginning of the fall semester, 1964.

The Forestry Building, occupied by the U. S. Forestry Service, and a storage and service building complete the physical plant.

THE JUNIOR COLLEGE

One of the most significant trends in American education of the past two decades has been the development and growth of the Junior College. Most junior colleges have retained their individuality as small colleges with all the advantages of instruction and school spirit that such colleges exhibit and at the same time they have been able to serve the immediate interests of the localities in which they are established.

Many high school students are not ready upon graduation from their high schools to enter a large university or college and successfully carry the work demanded of them at such institutions. The transition from high school to college is a difficult one to make, and much personal adjustment is necessary. To many students and their parents, the junior college provides the answer to this problem of transition. Proximity to home and home town environment, small classes, the friendly spirit of small campus life, emphasis upon good teaching, and the feeling that the student is an integral part of the school are all factors that make the junior college especially inviting.

Not any less important is the fact that junior college offers low cost college education of high scholastic standard. Many boys and girls graduating from high school are eager to continue their education but find themselves thwarted from pursuing their ambition because of the high cost of living conditions and tuition costs of many four-year institutions. Serving the needs and interests of all the citizens in the communities it represents, the junior college has provided the opportunity longed for by many ambitious students and has opened the way for them, through its terminal education programs, to become more valuable workers and job-holders than they might have had the opportunity otherwise to become.

With its predominating Christian atmosphere and influence, and its roots deeply imbedded in the American way of life, the junior College takes particular pride in the emphasis given to the development of character, to the training of its students in their duties as good citizens and to the awakening of their responsibilities as leaders in their respective communities.

It is the function of Chipola Junior College to encourage more high school graduates of the schools of Jackson, Calhoun and Washington Counties and other communities of this area to continue their education beyond the high school course. In areas now served by junior colleges great advantages have accrued to the business houses, industries, agricultural services and offices because of the increasing group of highly trained and educated personnel available for employment. This in turn provides greater opportunities for the young people and keeps them from seeking employment in other areas or states where their income and contribution to the community economy is lost. Thus, in its own way, the junior college contributes to the general economy and prosperity of the counties it serves. Chipola Junior College has as its aim and purpose to serve not only the three counties which contribute to its support, but through planned programs in the fields of industry and business, to serve the entire West Florida area and to do everything it can to foster opportunities for employment in and development of these fields of endeavor.

OBJECTIVES OF CHIPOLA JUNIOR COLLEGE

The over-all objective of Chipola Junior College is to meet the educational needs of the people it serves.

Specifically, Chipola Junior College has the following objectives:

1. To prepare students who expect to enter the professions for continuing their work in the upper divisions of four-year colleges and universities.

2. To train students whose formal education will end with the junior college by prescribing terminal programs that will fit them for employment in industry and business.

3. To provide services for adult members of the community who wish to further their formal education or enrich their cultural life through courses offered by the college.

The college is making a sincere effort to meet these objectives by offering:

1. Intelligent programs of study in the fields of general and pre-professional education.

2. Well-planned terminal and adult education programs.

3. An adequate counseling and guidance program.

4. A system of student government that trains for leadership and citizenship.

5. A well-rounded program of students activities.

6. A worth-while program of community activities.

CREDITS AND OFFICIAL STANDING

Chipola Junior College is a member of and is fully accredited by the Southern Association of Colleges and Secondary Schools, the regional accrediting agency for institutions of higher learning in this geographical area. This means that credits earned at Chipola are recognized and accepted by other colleges and universities throughout the United States.

Students planning to earn advanced degrees at four-year colleges and universities anywhere in the United States may transfer work completed at Chipola with no loss of credit.

The College is an active member of the American Association of Junior Colleges, the Southern Association of Junior Colleges, the Florida Association of Public Junior Colleges, and the Florida Association of Colleges and Universities. Institutional membership is also maintained in several other professional organizations open to institutions of higher learning.

VETERAN'S EDUCATION

Chipola Junior College is approved for training veterans under the provisions of Public Law 550 (Korean G. I. Bill of Rights) and Public Law 894 (Vocational Rehabilitation Act). The College also is approved by the Veterans Administration for training under Public Law 634 (War Orphans Assistance Act).

Prospective veteran students or the eligible children of deceased veterans who plan to attend under any of the Veterans Administration programs should secure a valid certificate of eligibility and present same to the Dean on or before the registration date. It is suggested that prospective students contact the nearest Veterans Administration office to make sure that all of the necessary papers are in order. Also, those desiring further information are urged to contact the Dean regarding the procedure and selection of a vocational objective.

ADMISSION

PROCEDURE

The procedure for entering freshmen or transfer students seeking admission to Chipola Junior College is as follows:

(1) Apply to the Office of the Registrar for Application for Admission and Secondary School Record forms. A form (Request for Admission Papers) found in this catalog may be used.

(2) Fill out the Application for Admission form and sign it. The Health Certificate on the back side of the application should be completed and signed by a physician. The completed form should then be mailed by the student to the Office of the Registrar.

(3) Entering freshmen should take the Secondary School Record form to the high school or preparatory school principal and request that it be completed, signed, and mailed DIRECTLY to the Office of the Registrar.

Transfer students should request the Registrar of the last college or university attended to forward an official transcript of their record directly to the Office of the Registrar.

Applicants for admission will be furnished complete instructions along with admissions papers. These instructions should be followed explicitly.

When all admission papers have been received in the office of the Registrar, the applicant will be advised by letter that he has been accepted for admission, or that further action is necessary in order to establish eligibility for admission. All applicants not clearly eligible for admission according to the requirements listed below, will be referred to the Chipola Junior College Admissions Committee.

Prospective students interested in enrolling for college level courses as an auditor or on a non-credit basis should contact the Registrar for procedure.

Students interested in enrolling in the Adult Division for non-college level work should contact the Director of Adult Division for instructions.

ADMISSION REQUIREMENTS

1. For Entering Freshmen (applicants who have never attended college).

a. Graduation from an accredited high school, or the equivalent as evidenced by the issuance of a certificate or diploma of high school equivalency by the Florida State Department of Education or a similar agency of another state, is required.

b. Graduates of accredited Florida high schools who attain scores on the Florida State-wide Twelfth Grade Testing Program tests which place them above the scores attained by the lowest 20% of the high school seniors of the state are academically eligible for admission. Such scores are indicated by a combined or total percentile score of 100 or higher on this battery of tests.

c. Graduates of non-Florida high schools and others who do not meet the requirements outlined above may establish academic eligibility for admission only by being favorably considered by the Chipola Junior College Admissions Committee. In each case the application will be considered on an individual basis, and any, or all, or any combination of the following types of evidence may be used in appraising the eligibility for admission: a personal interview, high school grades and rank in class, recommendation of the high school principal, and results of a college-level scholastic aptitude or entrance examination. After reviewing all evidence the Admissions Committee may grant or deny admission.

d. A health certificate from a practicing physician denoting the applicant's satisfactory physical condition and freedom from communicable disease is required.

e. To be admitted effective any semester or session, all evidence and forms referred to above must have been received and approved on or before the last date for registration as set forth in the official college calendar shown in this catalog.

2. For Transfer Students

a. An applicant who has previously attended or enrolled in any other college or university is classified as a transfer student. The transfer student must meet the requirements outlined above for entering freshmen, and is required to furnish evidence of an honorable dismissal by the last college or university in which he was enrolled.

b. The transfer student whose terminal status at the last institution attended was scholastic probation is eligible only for probationary admission to Chipola Junior College.

c. The transfer student who has been suspended for poor scholarship by the last institution attended is not eligible for admission until the expiration of one or more semesters after suspension. The application of all transfer students in this category must be considered by the Chipola Junior College Admissions Committee, who, after a personal interview and careful examination of all available evidence, may grant probationary admission or deny admission.

CHANGE OF REGULATIONS

The college reserves the right to deny admission to any applicant and to change admission requirements without notice.

STUDENT COSTS

FINANCIAL REGULATIONS

1. No registration will be complete until all fees and tuition have been paid in full. Students who are scholarship holders will be considered as having paid all fees and tuition, provided the amount of the scholarship covers all charges due. No faculty or staff member of the college, other than the President, has the authority to set aside this regulation.

2. For the purpose of assessing fees and tuition, students are classified as Florida district residents, Florida non-district residents, or non-Florida residents.

A Florida district resident, if under 21 years of age, is one whose legal parents or guardians have maintained legal residence in Jackson, Calhoun, or Washington Counties for the preceding twelve months. If the student is over 21 years of age, he must have maintained legal residence in one of the three counties for the preceding twelve months. The only exceptions are that locally stationed military service personnel and their children may be classified as Florida district residents without actually residing in the district for twelve months.

A Florida non-district resident student is one who meets the residence qualifications outlined above concerning the State of Florida, but has not resided in Jackson, Calhoun or Washington Counties for the preceding twelve months. The same exceptions concerning military service personnel and wives as outlined above applies.

All students who do not qualify as Florida district or Florida non-district residents are classified as non-Florida residents.

The status of the classification of a student is determined at the time of his first registration in the college, and may not thereafter be changed by him unless, in the case of a minor, his parents move to and become legal residents of Florida and/or the district by maintaining such residence for twelve consecutive months.

Any student claiming a residential classification other than that assigned to him by the Registrar at time of registration will be required to furnish legal proof in order to effect a change in classification.

FEES, TUITION AND OTHER COSTS

1. Matriculation Fee:

For the Fall and Spring semesters:

For all full-time *students: \$45.00 per semester

For all part-time *students: \$5.00 per semester hour.

For the summer session: None

2. Student Activity Fee:

For the Fall and Spring Semesters:

For all full-time *students: \$10.00 per semester.

For all part-time *students: \$5.00 per semester.

For the Summer session:

For all students: \$1.00 per semester hour.

3. Tuition:

For the Fall and Spring semesters:

For full-time *students:

Florida district residents: None

Florida non-district residents: \$10.00 per semester.

For part-time *students:

Florida district residents: None

Florida non-district residents: \$1.00 per semester hour.

Non-Florida residents: \$5.00 per semester hour.

For the Summer session:

All students: \$6.00 per semester hour.

4. Dormitory Room Rent, per student: \$90.00 per semester**

5. Applied Music Fee (Applicable only to students registered for Applied Music courses):

One lesson per week: \$22.50 per semester.

Two lessons per week: \$45.00 per semester.

6. Late Registration Fee (applicable only to students completing admission requirements or registering after the prescribed date): \$5.00

7. Transcript Fee (applicable only to those students who request more than one transcript; the first transcript is furnished free of charge): \$1.00 per transcript.

8. Graduation Fee (cap and gown rental and diploma; applicable only to graduating sophomores): \$7.50.

9. Books and School Supplies (estimated cost per school year): \$40.00.

10. Cafeteria Charges:

Students may purchase meal tickets at the rate of approximately \$200.00 per semester, or pay for their meals each time they eat at the cafeteria. The current cost for three meals is approximately \$1.85 per day. Meal prices are subject to change with the fluctuation in the cost of food.

*For fee and tuition assessment purposes students with loads of ten or more semester hours are assessed charges shown above for full-time student; those with loads of nine or less semester hours are assessed charges shown above for part-time students. This does not apply to other definitions of full and part-time students shown elsewhere in this catalog.

**Students who live in the dormitories are also required to pay a reservation deposit of \$15.00. This fee will be retained as a property breakage deposit as long as the student resides in the dormitories.

REFUND POLICY

1. For Matriculation Fee and Tuition charges the refund schedule for students who officially resign or withdraw from college prior to the end of a semester or summer session term is as follows:

For semester charges:

Resignation within ten days after official registration date: 75%

Resignation within eleven to twenty days after official registration date: 50%

Resignation within twenty-one to ninety days after official registration date: 25%

Resignation more than thirty days after official registration date: None

For summer session charges (per three week term):

Resignation within seven days after official registration date: 50%

Resignation more than seven days after official registration date: None

2. The Student Activity Fee, Late Registration Fee, and Graduation Fee are all non-refundable.

3. Dormitory rent, paid on a semester basis is non-refundable.

4. The Dormitory Room Deposit fee is refundable if the room reservation is cancelled thirty (30) days before the beginning date of the semester; or if the student has not damaged, destroyed or lost any dormitory property at the time he or she vacates the dormitory room. Partial refunds may be made provided property losses do not exceed \$15.00.

SUMMARY OF STUDENT COSTS

Student costs shown in this catalog, including those estimated, are the minimum amounts necessary and are not to be construed as the total expenditures of a student attending Chipola Junior College.

For the day student who commutes each day from home and resides in the college district, the minimum estimated expenses are \$150.00 per school year of two semesters. This includes \$110.00 for matriculation and student activity fees plus an estimated \$40.00 for books and school supplies. This does not include any allowance for meals or incidental expenses. Free school bus transportation is available.

The boarding student who lives in the dormitory five days per week and spends his week-ends at home will have minimum expenses of \$630.00 per school year, excluding transportation and incidental expenses. This includes the \$150.00 referred to above plus an estimated \$300.00 for meals and \$180.00 for room rent. Florida non-district residents should add \$20.00 per year tuition charges and non-Florida residents should add \$100.00 per year tuition charges.

The boarding student who lives in the dormitory the full seven days per week will have minimum expenses of \$800.00 per school year. This includes matriculation and student activity fees (\$110.00), room rent (\$180.00), books and school supplies (\$40.00), an estimated \$400.00 for meals, and an allowance of \$70.00 for incidental expenses including laundry. Florida non-residents should add \$20.00 and Non-Florida residents \$100.00 for tuition to this estimate.

STUDENT PERSONNEL SERVICE

GUIDANCE PROGRAM

Under the direction of Director of Student Personnel Services every member of the faculty participates in the student guidance program in order that each student may have the benefit of an adult counselor in the solution of his or her problems. Counselors provide assistance in the wise selection of objectives and courses, in the best methods of study and use of the library, and in such personal and social problems as an individual student may have.

At the beginning of the semester all entering or first-year students are required to attend orientation programs, participate in small group meetings and take certain tests. The President and other officers will be available during this time for personal conferences and students are urged throughout the year to feel free to consult not only their own counselor but any of the administrative staff.

Freshman Orientation is a required course for all entering students. Certain students are required to take remedial courses in order to improve reading ability.

A placement bureau for part-time and full-time employment of students has been established. Students who wish employment should consult the Director of Student Personnel Services for instructions.

SCHOLARSHIPS AND SELF-HELP

1. State Scholarships. Chipola Junior College is one of the approved Florida institutions for state General Scholarships for the preparation of teachers. These scholarships, awarded by the State Department of Education on a competitive basis, are for \$400.00 per school year for a maximum of four years. The recipient is obligated to teach one year in Florida's public schools for each year the scholarship is in effect. Otherwise the recipient must repay the scholarship. Interested students should contact their high school principal or County Superintendent of Public Instruction concerning competitive examinations for these scholarships.

2. Gift Scholarships. Several gift scholarships, administered by the College, have been established by civic clubs, individuals and business organizations of Northwest Florida.

All of these scholarships are awarded on the basis of financial need, character, and scholarship. All applications should be addressed to the Chairman, Scholarship and Student Aid Committee.

3. Work Scholarships. A revolving fund for work scholarships has been established by civic clubs, individuals and business organizations.

The establishment of this revolving fund has made possible the awarding of work scholarships to worthy students. The recipient of a work scholarship repays funds advanced by working for the college at the prevailing wage rate. No specific number of work scholarships are awarded. The number of students participating depends upon the amount of financial assistance needed by the recipients. Work scholarships are awarded on the basis of financial need, scholarship, character and work skills. All applications should be addressed to the Chairman, Scholarship and Student Aid Committee.

4. Part-time Employment: The College maintains a work-plan for students who wish to earn part of their expenses while attending school. Payment for

work will be made at the rate of sixty-five cents per hour. Working students may collect the amounts due them at regular intervals. Also, effort will be made to secure part-time employment for worthy students from Marianna business firms. Interested students are advised they will be able to earn only a part of their college expenses by means of part-time employment. All inquiries should be addressed to the Chairman, Scholarship and Student Aid Committee.

5. Student Loans. The W. H. Nobles Fund for Education and the J. C. Corcoran Fund for Education have been established by groups of Marianna business and professional men for the purpose of making loans to worthy Chipola Junior College students. Both funds are administered by the Scholarship and Student Aid Committee.

6. The college also participates in the loan program of the Florida Student Loan and Scholarship Commission. This state agency makes loans to Florida students for tuition and registration fees. Address inquiries to Chairman, Scholarship and Student Aid Committee.

STUDENT HOUSING

Dormitories for both men and women students are now under construction and are expected to be ready for occupancy effective the fall semester, 1964. Application for housing should be made at the time an application for admission is made.

All unmarried women students under the age of twenty-one are expected to live in the dormitory unless they reside with their parents or other close relatives. Permission for the students to live off-campus with persons other than parents or guardians must be secured in writing prior to registration.

Each student who expects to live in the college dormitories will be required to send a \$15.00 deposit with his application for college housing. This deposit will be retained as long as the student is residing in the dormitories. The deposit will be refunded to the student who (1) is not admitted to the college; (2) cancels his room assignment not less than thirty days before the beginning date of the semester or session for which room reservation is made; and (3) terminates occupancy in the dormitory in good standing.

The room deposit will be forfeited (non-refundable) (1) if a student is suspended for violation of disciplinary rules; or (2) cancels his room assignment less than thirty days prior to the beginning date of the semester or session. In the event any dormitory property is damaged, destroyed, or lost the room deposit will be used to cover or partially cover the cost of repair or replacement. Partial refunds may be made if costs do not amount to \$15.00.

The housing agreement will be made for one semester or summer session. The agreement becomes effective when the room rent is paid. Room rent is due and payable on a semester or summer session basis at the time a student completes registration. This payment is non-refundable.

Students living in the dormitories are expected to carry a regular academic load of not less than twelve hours per semester or an equivalent load for a summer session.

Specific information as to the date and hour of opening and closing of dormitories for student occupancy is given on the agreement for the semester or session concerned.

Student rooms are equipped with the necessary articles of furniture. Personal items or furnishings such as linens, rugs and curtains are not supplied. Students are expected to furnish sheets (single), pillow cases, blankets or quilts, and towels. Other articles of personal furnishings may be supplied by the student according to his individual tastes. However, no electrical appliance other than a radio may be used in the student's room. Utility rooms will be provided for such activities as ironing and hair drying.

All students living in the dormitories are expected to abide by rules and regulations for dormitory students as published in the student handbook. Copies

of these rules and regulations will be supplied to each student and to their parents prior to actual occupancy. The student and parents will be required to acknowledge receipt of these rules and regulations before the rental agreement becomes effective.

FOOD SERVICES

The cafeteria is located in the Student Center Building on the main campus. Students living both off and on the campus may use this facility for meals. Three meals will be served each day except Sunday when the evening meal is omitted.

Students may pay for their meals on a semester basis at the rate of approximately \$200.00 (plus sales tax) per semester for three meals each day, or they may pay for their meals each time they eat at the cafeteria. The current cost for three meals is approximately \$1.85 per day. Meal prices are subject to change with the fluctuation in the cost of food.

MEDICAL SERVICE

Although first aid treatment is available on the campus for minor injuries, student fees do not include any medical service. The college has no medical clinic or hospital. In case of serious illness or accident on the campus the parents and/or the family physician are notified immediately.

Emergency treatment by private physicians or hospitalization are at the student's or parents' expense.

SPORTS AND RECREATION

A distinct contribution to the recreational facilities of the college is the Student Center. In this building, open for all students, is located the student lounge, snack bar, and Student Government Association facilities. Also, in this building, dances, parties and receptions are held.

Chipola Junior College participates in interscholastic basketball, golf, and baseball. Its teams in former years have had successful seasons in the sports, and a good schedule of games with colleges in Florida and nearby states has been arranged. Students are urged to participate in these varsity sports, and it is the insistent wish of the administration that a high level of sportsmanship be maintained at all times.

The college offers a program of intramural sports in which all students may participate. Both women and men are urged to participate in one or more intramural sports activities.

Physical education is required of all students as a part of the academic curriculum. Students with physical disabilities may be relieved of this requirement upon the recommendation of a practicing physician. Veterans and other students over twenty-five years of age may be excused from physical education upon written application to the Dean.

STUDENT PUBLICATIONS AND ACTIVITIES

Publications: Students, under the direction of the Board of Student Publications and faculty advisors, are responsible for producing three publications: the **Papoose**, the monthly student newspaper; **Inklings**, a semi-annual literary magazine; and the **Chijuco**, the college annual. The major portion of the content of these publications is composed in two classes, College Publications and Advanced Composition; both are credit offerings of the Division of English and Humanities.

Speech Activities: Students are encouraged to participate in debate and dramatics. The Town and Gown Players present a full season of productions each year. The Debate Club annually enters state tournaments and challenges nearby junior colleges in debate competition.

Music Activities: The Glee Club is one of the outstanding organizations on the campus, and presents many programs to the public as well as the student body. The Lancers is a music organization, open by invitation only, to exceptional men singers; the Noteables is the organization open to exceptional women singers. The college pep band and orchestra are open, by invitation, to interested instrumental musicians. All music organization personnel cooperate in the production of musical programs including operas and operettas.

Service and Honorary Organizations: The Student Government Association represents, through its elected officers and representatives, the entire student body.

The Golden Arrow is the college honor society for the recognition of students with high academic averages.

Mu Alpha Theta is a scholastic honorary fraternity open to qualified Mathematics students.

The Circle K is a men's student civic club sponsored by the local Kiwanis Club.

La Chipa is a service organization open to all women students.

Religious Organizations: Marianna churches sponsor religious organizations for college students. Although these are not college organizations they are open to Chipola students who desire to participate.

GENERAL REGULATIONS

RESPONSIBILITY FOR REGULATIONS

Students will be held responsible for the observance of all regulations and information contained in this catalog. Students will also be held responsible for all official announcements posted on bulletin boards and contained in official weekly bulletins and other official publications of the college.

REGISTRATION

Students are required to register at the beginning of each semester or session for assignment to classes. Students completing registration after the registration date prescribed in the calendar will be charged a late registration fee of \$5.00. No registration will be accepted after the last day prescribed for each semester or session as shown in the college calendar.

New or entering students are required to report for pre-registration orientation, testing and counseling on the date announced in the calendar.

After a student has been duly registered, he may change his schedule, drop or add a course, only with the permission of the Dean. The student should consult the college calendar for the last date for making such changes.

After the date prescribed in the calendar for changing class schedules, a student will be authorized to drop a course without penalty only in case of extenuating circumstances. Each case will be handled individually by the Dean. In general, authorization to drop a course will be given only if, in the judgment of the Dean, the student's college program and over-all progress will be benefitted by such action. Personal illness, financial hardships, and an over-loading of student capacity may be considered as extenuating circumstances. No student will be allowed to drop a course without penalty after the date shown in the calendar for such action.

ATTENDANCE

Regular attendance is expected and required of all students. For emergency purposes only one absence per semester hour of work will be allowed in each course. Absences in excess of this number must be answered in person to the Dean, and the student may be subject to the loss of quality points or credit, or dismissal from the college.

DISCIPLINE

The administration expects all students to conduct themselves as ladies or gentlemen at all times, both on and off the campus. Rules and regulations governing student conduct have been set up by the Chipola Junior College Student Government Association and approved by the President. Violation of these rules will subject the student to dismissal from the college.

Disciplinary probation refers to certain individually prescribed conditions concerning personal behavior which must be maintained if the student who has violated disciplinary rules is to remain in college. Disciplinary suspension refers to action whereby a student is suspended or "dropped" from college for an infraction of disciplinary rules or violation of disciplinary probation.

The decision of the President in all cases involving an infraction of disciplinary rules will be final.

GRADING SYSTEM

Final grades are assigned each student by the instructor in each class or course at the end of each semester or session. Final grades assigned are, with the exception noted below, permanent and are recorded on the student's permanent record.

The following system of grading and assignment of quality points is used:

A grade of A denotes Excellent work; 4 quality points per semester hour are assigned.

A grade of B denotes Good work; 3 quality points per semester hour are assigned.

A grade of C denotes Average work; 2 quality points per semester hour are assigned.

A grade of D denotes Poor, but passing, work; 1 quality point per semester is assigned.

A grade of F denotes failure; no quality points are assigned and no credit is granted.

A grade of I denotes incomplete work; no quality points are assigned and no credit is granted. This grade becomes an F if not removed by completion of work within six weeks of the succeeding semester or summer session.

A grade of W denotes official withdrawal from the course without penalty; no credit or quality points are assigned, but the course does not count toward the student's scholastic average.

A student who unofficially discontinues class attendance will be assigned a grade of F for the course. The grade of W will be assigned only in class where the student officially resigns as a student or receives permission to drop a course without penalty.

Grades of A, B, and C are satisfactory grades. D and F are unsatisfactory. Although most colleges will not accept a transfer grade of D, work for which that grade is assigned applies towards the hours needed for graduation.

Final grades assigned by instructors are based upon daily work, special reports, research papers, laboratory or field work, tests, and final examination. Tests or quizzes, written or oral, may be given at any time at the discretion of the instructor. Regularly scheduled examinations may be given at the end of each semester or session. Special examinations or re-examinations will be given only with the approval of the Dean.

Scholastic or grade point averages are based upon the number of semester hours attempted and the number of quality points earned. To be eligible for graduation, a student must earn at least twice as many quality points as he has semester hours of work attempted. Although credit is awarded only one time for a single course repeated or taken twice, the semester hours attempted and quality points are counted twice.

A student may determine his scholastic or grade point average by dividing semester hours attempted into quality points earned. An average of 2.00 means that the student has earned twice as many quality points as he has attempted semester hours of work.

GRADE REPORTS

Advisory grade reports indicating the progress or standing of students are mailed at the middle of each semester. Final grade reports are mailed at the end of each semester of session. Grade reports are mailed to the parents of all students except those over twenty-one years of age. For students over twenty-one years of age the grade reports will be mailed only to the student.

STUDENT LOAD

The minimum load for full-time students is twelve semester hours per semester or three semester hours per term of the summer session. All other college level students are classified as part-time students. However, veterans and war orphans enrolled under the provisions of Title No. 38, U. S. Code, are required to carry a load of at least fourteen semester hours per semester in order to be considered full-time students for subsistence allowance purposes; special provisions apply to the summer session.

The following regulations apply concerning the maximum student load:

1. The maximum student load for an entering or first-time student is eighteen semester hours per semester.

2. A student who has a scholastic average of 2.50 or above for the preceding semester or session may carry a maximum load of nineteen semester hours per semester.

3. A student who has a scholastic average of 3.00 or above for the preceding semester or session may carry a maximum load of twenty-one semester hours per semester.

4. Students on scholastic probation are limited to loads of sixteen semester hours per semester.

5. The maximum load for any student during the summer session is ten semester hours per nine weeks session, and seven semester hours per six weeks session.

SCHOLASTIC PROBATION

Scholastic probation refers to conditions or terms that must be met by a student in order to remain a college student.

"Admitted on probation" denotes that the student must maintain a certain grade point average for the first semester or session enrolled in order to remain a student or re-enroll for the next semester or session. A student admitted on probation is notified by letter of the terms of the probation. If, and when, he registers, he accepts the terms of probation.

A student who fails to maintain a 1.50 ("D plus") scholastic average for any semester or session (but is not subject to scholastic suspension) will be placed on probation for the next semester or session enrolled. Should the student then re-enroll and fail to maintain a 1.50 scholastic average, he will be subject to scholastic suspension.

Students who re-enroll after scholastic suspension are on scholastic probation for their first semester or session.

Students who earn scholastic averages of 1.50-1.99 exclusive will be continued on probation.

Probation will be removed if the student maintains a 2.00 scholastic average as a full-time student for a semester or full summer session.

SCHOLASTIC SUSPENSION

Scholastic suspension refers to action whereby a student is suspended or "dropped" from the college because of poor scholarship.

A student who fails to pass half of the semester hours attempted or pursued during any semester or session, or who fails to maintain a scholastic average of 1.00 ("D") for any semester or session is subject to scholastic suspension. However, this regulation does not apply to a student pursuing but a single three semester hour course.

A student who is placed on scholastic probation and fails to meet the terms or conditions of probation is subject to scholastic suspension.

A student who has been suspended is eligible for readmission on probation after one semester. However, a student is not eligible for readmission after a second suspension. A summer session does not count as a semester of suspension.

Scholastic suspension is handled by the Dean. Appeals may be made through the Faculty Administrative Council to the President whose decision is final. If a student placed on scholastic suspension by the Dean successfully appeals his suspension, he may be allowed to remain in college only on a probationary basis.

Should a student on scholastic suspension attend college elsewhere prior to the end of the suspension period, credit earned elsewhere will not be accepted by Chipola.

TRANSFER STUDENTS

A student who has previously attended or been enrolled in any other college or university is classified as a transfer student on admission to Chipola Junior College. Such students must meet regular admission requirements, plus presenting proof of an honorable dismissal and eligibility to return to the last institution attended.

An evaluation of credit earned elsewhere is made by the Dean for each transfer student. No work completed elsewhere with a grade below "C" is accepted as semester hours toward graduation by Chipola Junior College.

Credits earned at other institutions accredited by regional accrediting agencies are, subject to the provision noted above, accepted unprovisionally. Credits earned at unaccredited institutions are handled on an individual basis; in general, such credits are accepted on a provisional basis.

PHYSICAL EDUCATION

Physical education courses, described elsewhere in this catalog, are considered an important part of the student's curriculum. With the exceptions noted below, all full-time students will be required to take four semester hours of physical education activity courses (those listed under Required Physical Education) as a requirement for graduation. Full-time students must schedule one course per semester unless specifically excused by the Dean. Exceptions to this requirement are noted below:

1. Students who are physically unable to participate in regular activity courses as evidenced by a certificate or letter from their physician are exempt the physical education requirement.

2. Students who are twenty-five or more years of age need not enroll and are exempt the requirement.

3. Students who have twenty-four or more months of active military service are exempt the requirement, and may, on application, be awarded credit in physical education.

4. Students with less than twenty-four months of active military service may be exempted physical education at the rate of one semester hour for each six months or major fraction thereof of military service. On application, credit in physical education may be awarded on the same basis.

READING CLINIC

Chipola Junior College firmly believes that reading proficiency is essential if the student is to perform satisfactorily in college. Therefore, certain students whose test scores indicate a lack of the reading skills necessary for successful college work, are required to schedule Reading Clinic as a non-credit course. This course is designed to develop the reading proficiency of entering students whose test scores indicate an inadequacy, and to improve the reading skills of any other students. The course is open to any interested student.

ORIENTATION

In addition to pre-registration orientation activities, all entering students are required to schedule Freshman Orientation, a one semester hour course during their first semester. Transfer students will also be required to take this course unless they have already completed a similar, comparable, or more advanced course elsewhere.

Sophomore Orientation is a required non-credit course scheduled for the second semester of the sophomore year. This course, designed to aid the student with problems of transfer to another college or entry into employment, meets once per week for eight or less weeks.

HONORABLE DISMISSAL AND TERMINAL STATUS

A student is entitled to an honorable dismissal if his financial and disciplinary records are clear. This, in effect, means that the student is not indebted to the college and is not on disciplinary probation or suspension. Honorable dismissal is not synonymous with eligibility to re-enroll because it does not take into consideration scholastic suspension.

The official transcript of the record of a Chipola Junior College student, furnished only at his request, will indicate the student's terminal status. In the absence of any entry to the contrary on his record, the student is entitled to an honorable dismissal and is eligible to re-enroll. If the student is on any type of probation or suspension, his status will be clearly indicated.

REQUIREMENTS FOR GRADUATION

To be awarded the Associate in Arts Diploma by Chipola Junior College, a student must be entitled to an honorable dismissal; must be eligible to re-enroll; must have maintained a scholastic average of 2.00 or better on all work attempted; and must have completed a total of not less than sixty-four semester hours of acceptable college work, the last twenty-four semester hours being taken in residence at Chipola Junior College. The semester hours offered for graduation must include the following:

- For students pursuing University Parallel Courses of Study:
General Education Requirements (listed elsewhere in this catalog) _____ 46 sem. hrs.
Electives _____ 18 sem. hrs.
- For students pursuing Specialized Technical and Business Courses of Study*:
General Education Requirements* _____ 34 sem. hrs.
Other Prescribed Courses* _____ 30 sem. hrs.

*A maximum of twelve semester hours of the general education requirements may be waived by the Dean if the student is pursuing one of the prescribed courses of study. Therefore for students pursuing one of the Specialized Technical and Business Courses of Study, only thirty-four (34) semester hours of the general education courses are required.

A certificate may be awarded to those students who meet all of the requirements for graduation except the maintenance of the 2.00 scholastic average.

GENERAL EDUCATION

Chipola Junior College accepts the basic definition of general education formulated by the American Council on Education in 1944. Chipola Junior College, therefore, conceives general education to be the non-specialized and non-vocational parts of a student's education that should be held in common by all well educated persons who are to become good citizens, parents, and workers.

The general education program at Chipola Junior College is designed to improve intellectual skills and develop understandings in the broad areas of liberal education which will equip its students for effective personal living and responsible citizenship. This program is also designed to provide students an opportunity to become acquainted with broad areas of subject matter and thus aid them in discovering their own interests and abilities.

The program outlined below is designed to serve both the students whose formal education ends at the junior college level and those whose training will later become highly specialized. Both types of students need broad educational backgrounds; one type because they lack a high degree of specialization, and the other in order to understand and appreciate the relationship of their specialties to the society in which they will live.

Chipola's general education program consists of 46 semester hours of work in seven subject areas. The student must complete 34 semester hours from the various areas as listed under minimum requirements in Areas 1-6 inclusive. An additional 12 semester hours must be selected from any area or combination of areas, 1-7 inclusive. Semester hours shown as maximum are the maximum number in that area that may be counted toward satisfying the general education requirement of 46 semester hours. Additional semester hours from any area may be counted toward graduation, but not toward meeting the general education requirement.

The seven areas are:	Minimum	Maximum
Area 1: The Social Sciences	6 sem. hrs.	12 sem. hrs.
Area 2: The Natural Sciences	6 sem. hrs.	12 sem. hrs.
Area 3: Mathematics	3 sem. hrs.	9 sem. hrs.
Area 4: Communication Skills	8 sem. hrs.	12 sem. hrs.
Area 5: The Humanities	6 sem. hrs.	12 sem. hrs.
Area 6: Personal Development	5 sem. hrs.	11 sem. hrs.
Area 7: Foreign Language	0 (no minimum)	12 sem. hrs.

The required or minimum courses plus other courses allowable toward the maximum in each area are as follows:

Required	Others
Area 1: 6 semester hours from among the following: SSC 111-112, Survey of the Social Sciences (2,3) HIS 121-122, Western Civilization (3,3) HIS 201-202, American History (3,3) POL 211, American Federal Govt. (3) POL 212, State and Local Govt. (3)	EC 205-206, Principles of Economics (3,3) GEO 205-206, World Geograph (3,3) SOC 150, Introductory Sociology (3)
Area 2: 6 semester hours from among the following: BSC 111-112, General Biology (3,3) BSC 220, General Zoology (4) CHE 155-156, General Chemistry (4,4) PSC 111-112, Survey of Physical Science (3,3) PHY 121-122, General Physics (4,4)	BSC 205, Human Physiology (3) BSC 210, General Botany (4) PHY 201-202, General Physics (5,5)

Area 3:
 3 semester hours from among the following:
 MA 115, Fundamentals of Mathematics (3)
 MA 140, College Algebra (3)
 MA 165, Integrated Freshman Mathematics (4)

Area 4:
 8 semester hours from among the following:
 EN 121-122, Communication Skills (4,4)

Area 5:
 6 semester hours from among the following:
 HU 211-212, The Humanities (3,3)

Area 6:
 5 semester hours from among the following:
 OR 100, Freshman Orientation (1)
 Required Physical Education (4)

Area 7:
 (No minimum required)

MA 150, Plane Trigonometry (3)
 MA 166, Integrated Freshman Mathematics (4)
 MA 205, Plane Analytic Geometry (3)

SPE 205, Effective Speaking (3)
 SPE 221-222, Argumentation and Debate (2,2)
 EN 250, Advanced Composition (2)

ART 150, The Purpose of Art (3)
 ART 160, The Elements and Principles of Art (3)
 EN 211-212, Survey of English Literature (3,3)
 EN 221-222, Survey of American Literature (3,3)

HE 125, Personal and Community Health Problems (3)
 PHI 185, Practical Logic (3)
 PHI 205, Elementary Ethics (3)
 PSY 115, Psychology of Personal Adjustment (3)
 PSY 205, General Psychology (3)
 SOC 110, Preparation for Marriage (3)
 SOC 205, Marriage and the Family (3)

SPA 101-102, Elementary Spanish (3,3)
 SPA 201-202, Intermediate Spanish (3,3)

COURSES OF STUDY

UNIVERSITY PARALLEL

COURSES OF STUDY LEADING TO ADVANCED DEGREES AT FOUR-YEAR COLLEGES AND UNIVERSITIES

General Information

Any student who plans to transfer to a four-year college or university after graduation from Chipola Junior College should consult the Dean concerning an approved course of study that will fulfill the requirements of the school to which he expects to transfer. Also, the student may write to the Registrar or Dean of the school he expects to attend after graduation from Chipola for instructions concerning his course of study while attending Chipola.

The courses of study listed below are the suggested courses of study to follow. It is felt that they will fulfill the requirements for the first two years of work at most four-year colleges.

1. GENERAL COLLEGE.

This curriculum should be followed by students who expect to transfer to a four-year college, but have not yet decided upon a definite objective. Also, this curriculum is designed to fulfill the general college or general education requirements of most four-year colleges.

FRESHMAN YEAR	Sem. Hrs.	SOPHOMORE YEAR	Sem. Hrs.
OR 100	1	HU 211-212	6
PSC 111-1112** or BSC 111-112*	6	BSC 111-112* or PSC 111-112**	6
Mathematics***	3-4	SPE 205	3
Social Science****	6	Social Science****	6
PE (Required)	2	PE (Required)	2
EN 121-122	8	Electives*****	9
Electives*****	6-9		
			32
	32-36		

*BSC 210 or 220 may be substituted.

**CHE 155-156 may be substituted.

***Any one course; student may elect MA 115, 140, or 165.

****Any six semester hours in History, Economics, Political Science, Geography, Sociology or Social Science (Survey); SSC 111-112 is recommended for the Freshman year. Students planning to transfer to Florida State University should take SSC 111-112 during the Freshman year and HIS 121-122 during the Sophomore year.

*****The Dean or other faculty counselor should be consulted concerning elective subjects. In general, they should be in the area or field of the student's major interest. Students planning to transfer to the University of Florida should include PHI 185.

2. PRE-AGRICULTURE.

This curriculum includes the first two years of work for students who plan to earn a degree in Agricultural Education, Agricultural Science, or Agricultural Engineering. It is designed primarily for students who expect to transfer to the University of Florida. Students who plan to transfer to Auburn University or other schools should consult the Dean for a planned program.

FRESHMAN YEAR	Sem. Hrs.	SOPHOMORE YEAR	Sem. Hrs.
OR 100	1	HU 211-212	6
EN 121-122	8	CHE 155-156***	8
BSC 111-112	6	BSC 210 and 220*	8
Math** and PHI 185****	6-7	Electives*****	10
SSC 111-112	6	PE (Required)	2
PE (Required)	2		
Electives*****	3-6		
			34
	32-36		

*Student may elect to take only BSC 211 and 220. However, General Biology, General Botany and General Zoology are recommended.

**MA 115 meets the minimum requirement. However, MA 165-166 (8 semester hours) should be taken if student plans to enter Agricultural Engineering; also either MA 140 and 150 or 165-166 are recommended for all students. At least MA 140 should be pursued as either a pre-requisite or corequisite for Chemistry.

***CHE 100 should be pursued during the Freshman year if student's record and test scores indicate a weakness in Chemistry or Mathematics.

3. PRE-BUSINESS ADMINISTRATION.

The program of study outlined below is recommended for those students planning to work toward a degree in Business Administration, Business Administration-Law combination, or Public Administration.

FRESHMAN YEAR	Sem. Hrs.	SOPHOMORE YEAR	Sem. Hrs.
EN 121-122	8	ACC 201-202	6
BUS 125	3	EC 205-206	6
PSY 205 or PHI 185*	3	HU 211-212	6
Mathematics**	3-8	MA 220	3
BSC 111-112 or PSC 111-112	6	EN 250 or BUS 225	2-3
OR 100 and PE (Required)	3	PE (Required)	2
Social Science***	6-3	SPE 205	3
		Social Science***	6-3
	32-34		34-32

*PSY 205 for transfers to Florida State University; PHI 185 for transfers to University of Florida.

**MA 140 is recommended as the minimum for all students; MA 165-166 is required for those students transferring to the University of Florida, and is highly desirable for all students.

***Students Planning to transfer to Florida State University should schedule SSC 111 and HIS 121-122; those transferring to the University of Florida need SSC 111-112 or POL 211-212 plus one additional three semester hour course.

4. PRE-EDUCATION.

This is the recommended curriculum for students planning to work toward a degree in Elementary or Secondary Education. Curricula for Agricultural Education and Home Economics Education are listed elsewhere in this section. This curriculum does not apply to Art or Music Education.

FRESHMAN YEAR	Sem. Hrs.	SOPHOMORE YEAR	Sem. Hrs.
EN 121-122	8	HU 211-212	6
PSC 111-112 or BSC 111-112*	6	BSC 111-112 or PSC 111-112*	6
OR 100	1	PSY 206 or 207**	3
PSY 205**	3	Social Science***	6
MA 115 or 140*	3	PE (Required)	2
Social Science***	6	Electives****	9
PE (Required)	2		
Electives****	3-6		
	32-35		32

*Chemistry should be pursued instead of PSC 111-112 if student plans to teach Science in the secondary school. BSC 210 and 220 should be pursued instead of BSC 111-112 if the student expects to have Science as a major field. Student should take MA 165-166 instead of 115 or 140 if he expects to teach Mathematics; this would necessitate taking MA 255-256 during the Sophomore year instead of other work shown above.

**PSY 205 is required for all students who intend to teach. It should be scheduled for either the second semester of the Freshman year or the first semester of the Sophomore year. Students planning to transfer to Florida State University or the University of Florida should take either PSY 206 or 207. In general, PSY 206 is recommended for elementary majors and PSY 207 for secondary majors. Neither PSY 206 nor 207 are scheduled for the first two years at Troy State College; students planning to transfer there should take other subjects in the social science area or electives instead of PSY 206 or 207.

***Students planning to transfer to Florida State University need SSC 111 and HIS 121-122, plus SSC 112 or one course in Sociology, Political Science, Economics, or Geography. Students planning to transfer to Troy State College need HIS 201-202, SOC 150, and GEO 205-206. Elective subjects should be in the social science area if the student plans to teach in that area of the secondary school.

***ED 105 during the Freshman year is recommended for all students except those planning to transfer to Troy State College.

5. PRE-ENGINEERING.

The program outlined below is designed primarily for students who plan to transfer to the University of Florida and earn a degree in some field of Engineering. Footnotes give necessary variations for students who plan to transfer to Auburn University. Students planning to transfer to any other college should consult the Dean for a planned program.

FRESHMAN YEAR	Sem. Hrs.	SOPHOMORE YEAR	Sem. Hrs.
EN 121-122	8	HU 211-212***	6
MA 165-166*	8	MA 255-256	8
Social Science***	6	PHY 201-202**	10
CHE 155-156**	8	ENG 205-206****	6
PE (Required)	2	PE (Required)	2
OR 100	1		
	<hr/>		<hr/>
	33		32

*Students not qualified to take MA 165 during the first semester will be required to take MA 115 as a prerequisite. Such students will take MA 115 during the first semester, MA 165 during the second semester, and MA 166 during the summer session. They will then be ready to take MA 255-256 during the Sophomore year. If the student does not take MA 165-166 prior to the beginning of the Sophomore year, MA 255-256 (Calculus) must be postponed until the Junior year.

**Students not qualified to take Chemistry 155 on entrance will be required to take CHE 100 as a prerequisite. This may necessitate shifting Chemistry to the Sophomore year, and Physics will have to be postponed until the Junior year unless some work is taken during the summer session.

***SSC 111-112 is recommended for students planning to transfer to the University of Florida; other subjects such as Political Science and Economics are acceptable. Students planning to transfer to Auburn University should schedule EC 205 and either HIS 201 or 202.

****Students planning to transfer to Auburn University should take GEO 205 and SPE 205 instead of HU 211-212.

*****ENG 205-206 may be pursued during the Freshman year, but the Sophomore year is recommended. If it is taken during the Freshman year, Social Science should be pursued during the Sophomore year.

6. PRE-FORESTRY.

The curriculum outlined below is designed primarily for those students who plan to transfer to the University of Florida and earn a degree in Forestry. Students who plan to earn a degree in Forestry at Auburn University or other schools should consult the Dean for a planned program of study.

FRESHMAN YEAR	Sem. Hrs.	SOPHOMORE YEAR	Sem. Hrs.
EN 121-122	8	HU 211-212	6
MA 165-166*	8	CHE 155-156	8
SSC 111-112	6	EC 205-206	6
Biological Science**	6-8	PHY 121	4
OR 100 & PE (Required)	3	Biological Science**	0-8
	<hr/>	PE (Required)	2
	31-33	FOR 205***	2
		Elective***	4-0
			<hr/>
			32-36

*MA 115 must be scheduled if the student is not qualified to take MA 165 on entering college.

**BSC 220 (General Zoology) and BSC 210 (General Botany) are required. However, at least one semester of General Biology (BSC 111) or consent of the department is a prerequisite for both BSC 220 and 210. Most students will be advised to take BSC 111 or 111-112 prior to scheduling BSC 220 or 210. Therefore, students will take 8 to 14 semester hours in this area.

***PHY 122 or ENG 205 are recommended if scheduling permits; one or both should be scheduled if FOR 205 is not offered.

7. PRE-HOME ECONOMICS.

The course of study listed below is recommended for all students who plan to earn a degree in Home Economics or Home Economics Education.*

FRESHMAN YEAR	Sem. Hrs.	SOPHOMORE YEAR	Sem. Hrs.
EN 121-122	8	See* (Below).	
BSC 111-112	6		
CHE 155-156**	8		
MA 140	3		
PSY 205	3		
SSC 111 or SOC 150	3		
PE (Required)	2		
OR 100	1		
	<hr/>		<hr/>
	34		

*Since Chipola does not presently offer professional courses in Home Economics it is recommended that the student transfer to a college offering such courses after two or three semesters. Additional work applicable toward a degree in this field is offered at Chipola, but the student will be handicapped by not being able to take Freshman and Sophomore level professional courses until the Junior year. If the student takes more than two semesters of work at Chipola, Humanities 211-212, History 121-122, Economics 205, Sociology 150, and Speech 205 should be scheduled.

**If the student is not eligible to take Chemistry 155 on entering college, CHE 100 should be scheduled as a prerequisite. This might necessitate the postponement of Chemistry to the Sophomore year.

8. PRE-LAW.

This is the recommended course of study for all students who expect to earn the bachelor's degree and subsequently enter any school of law.

FRESHMAN YEAR	Sem. Hrs.	SOPHOMORE YEAR	Sem. Hrs.
EN 121-122	8	HU 211-212	6
PSC 111-112 or BSC 111-112	6	BSC 111-112 or PSC 111-112	6
MA 115 or 140	3	SPE 205 and PSY 205	6
HIS 201-202 or POL 211-212	6	POL 211-212 or HIS 201-202	6
SPA 101-102 or Electives*	6	SPA 201-202 or Electives*	6
PE and OR 100	3	PE (Required)	2
	<hr/>		<hr/>
	32		32

*Foreign language is required if the student elects to earn the B.A. or A.B. degree prior to entering law school; also, some law schools require foreign language for entrance. The University of Florida does not require foreign language for entrance to law school. If the student elects to take other subjects instead of Spanish, the 12 or more semester hours should be selected from ACC 201-202, EC 205-206, and HIS 121-122. PHI 185 should be scheduled if the student plans to transfer to the University of Florida.

9. ART OR ART EDUCATION.*

The curriculum outlined below is recommended for all students who plan to earn a degree in Art or Art Education.

FRESHMAN YEAR	Sem. Hrs.	SOPHOMORE YEAR	Sem. Hrs.
EN 121-122	8	ART 131-132 and 211-212	8
ART 150 and 160	6	HIS 121-122	6
BSC 111-112 or PSC 111-112	6	HU 211-212	6
SSC 111 or MA 115	3	PE (Required)	2
PE and OR 100	3	MA 115 or SSC 111	3
ART 111-112	4	PSY 205	3
ART 121-122**	4	Electives**	3-6
	<hr/> 34		<hr/> 31-34

*Foreign language is sometimes required for the A.B. or B.A. Degree in Art.

**Art 121-122 may be scheduled either Freshman or Sophomore year; it is not normally required for Art Education. If the student expects to transfer to a college requiring a foreign language, SPA 101-102 and 201-202 should be scheduled instead of some courses listed above.

10. MUSIC OR MUSIC EDUCATION.

The curriculum outlined below is recommended for students who plan to major in Music or Music Education.*

FRESHMAN YEAR	Sem. Hrs.	SOPHOMORE YEAR	Sem. Hrs.
EN 121-122	8	MU 201-202 and 221-222	8
BSC 111-112	6	Applied Music**	4-6
PE and OR 100	3	Music Organization***	2
MU 101-102 and 121-122	8	MU 230	3
Applied Music**	6-4	HIS 121-122	6
Music Organization***	2	SSC 111 or SOC 150	3
Restricted Electives****	0-6	PE (Required)	2
	<hr/> 33-37	Restricted Electives****	6
			<hr/> 34-36

*Students following this curriculum will not meet Chipola's graduation requirements. However, those interested in doing so should consult requirements, plan to attend a summer session, and select electives accordingly.

**See MU 151-152-251-252 and 161-162-261-262.

***See MU 105-106-205-206, 107-108-207-208, 109-110-209-210, and 115-116-215-216.

****Courses to be pursued depend on whether student plans to earn degree in Music or Music Education, and on whether major emphasis will be vocal or instrumental. At least one year of Spanish is recommended for vocal majors. Music education majors should include PSY 205 and either MA 115 or SPE 105. Other desirable courses for any major who does not schedule Spanish are PSC 111 or PHY 121, MA 115 or 140, and SPE 105.

11. PRE-MEDICAL AND PRE-DENTAL.

The first two years of work for students who plan to enter schools of medicine or dentistry. Pre-medical students planning to enter schools requiring a foreign language must schedule French or German during the third and fourth years.



SOCIAL SCIENCE BUILDING

FRESHMAN YEAR	Sem. Hrs.	SOPHOMORE YEAR*	Sem. Hrs.
EN 121-122	8	HU 211-212	6
MA 165-166	8	CHE 221-222	8
CHE 155-156	8	PHY 121-122	8
Biological Science**	6-8	Social Science***	6
PE and OR 100	3	Biological Science**	3-8
		PE (Required)	2
			33-38

*Three to six hours during a summer session is often necessary in order to complete this curriculum. PSY 205 should be added if a summer session is included.

**Some students may be required to take BSC 111 or 111-112 (General Biology) as preparation for BSC 205, 210 and 220. If so, a total of 14 to 17 hours in this area would be scheduled. The minimum recommended is BSC 205, 210, 220 plus BSC 111 if needed as a prerequisite.

***HIS 121-122, HIS 201-202, POL 211-212, or SSC 111-112.

12. PRE-PHARMACY.

The first two years of work for students who plan to enter a school of pharmacy.

FRESHMAN YEAR	Sem. Hrs.	SOPHOMORE YEAR	Sem. Hrs.
EN 121-122	8	HU 211-212	6
BSC 111-112	6	CHE 221-222	8
CHE 155-156	8	PHY 121-122	8
Mathematics*	6-8	Social Science**	6
PE and OR 100	3	PE (Required)	2
		Elective***	3
	31-33		33

*MA 165-166 (8 semester hours) is recommended; MA 140 and 150 (6 semester hours) will meet the minimum Mathematics requirement for some schools.

**SSC 111-112, HIS 201-202, or POL 211-212 are recommended.

***Additional course in Social Science area or PSY 205 is recommended.

13. PRE-OPTOMETRY

The first two years of work for students who plan to enter a school of optometry.

FRESHMAN YEAR	Sem. Hrs.	SOPHOMORE YEAR	Sem. Hrs.
EN 121-122	8	HU 211-212	6
MA 140 and 150	6	CHE 155-156	8
BSC 111-112	6	PHY 121-122	8
HIS 121-122	6	BSC 220	4
PSY 205	3	PSY 206	3
PE and OR 100	3	SOC 150 or BSC 205	3
		PE (Required)	2
	32		34

14. MEDICAL TECHNOLOGY.

The curriculum outlined below is recommended for all students who plan to become medical or laboratory technicians. It is designed for those students who plan to earn the bachelor's degree and for those who expect to enter a hospital or technical school for further training.

FRESHMAN YEAR	Sem. Hrs.	SOPHOMORE YEAR	Sem. Hrs.
EN 121-122	8	HU 211-212	6
SSC 111-112	6	BSC 220 and 210	8
MA 140 or 165	3-4	CHE 221-222**	8
CHE 155-156	8	PSY 205 or PHI 185	3
BSC 111 or 111-112*	3-6	PHY 121	4
OR 100 and PE (Required)	3	PE (Required)	2
		Elective***	0.4
	31-35		31-35

*BSC 111 or consent of department is a prerequisite for BSC 220 and BSC 210; both BSC 111 and 112 are recommended if schedule permits.

**Organic Chemistry may be delayed until the third year; some schools require only 4 or 5 semester hours; some require quantitative analysis (not offered at Chipola). If CHE 221-222 is not scheduled, both PHY 121 and 122 plus an elective are recommended.

***PHY 122 and/or additional work in Mathematics is recommended.

15. PRE-JOURNALISM AND COMMUNICATIONS.

The first two years of work for students who expect to enter schools of journalism or journalism and communications.

FRESHMAN YEAR	Sem. Hrs.	SOPHOMORE YEAR	Sem. Hrs.
EN 121-122	8	HU 211-212	6
PSC 111-112 or BSC 111-112	6	BSC 111-112 or PSC 111-112	6
MA 115	3	POL 211-212	6
PHI 185 or PSY 205	3	HIS 201-202	6
JOU 161-162	2	JOU 261-262	4
OR 100 and PE (Required)	3	PE (Required)	2
SSC 111-112 or HIS 121-122	6	EC 205 or SPE 205	3
SPE 205 or EC 205	3		
	34		33

16. NURSING.

Chipola Junior College now offers most of the courses required during the first two years for those students who desire to earn a bachelor's degree in Nursing. Also, the college offers work recommended for those students who desire some college training prior to entering a hospital school for the Registered Nurses' course. We recommend that the student spend from two to four semesters at Chipola, depending upon her specific objectives in the field and plans for the future training. All students interested in Nursing should contact the Dean for a course of study to follow while at Chipola.

The Licensed Practical Nurses course is offered through the Adult Division.

17. OCCUPATIONAL OR PHYSICAL THERAPY.

Students interested in working toward a degree in Occupational or Physical Therapy should consult the Dean for a planned program. Chipola offers most of the required courses for the first two years of both curricula. Students may complete two years at Chipola and transfer to professional schools as juniors with only minor scheduling difficulties.

18. PRE-MINISTERIAL.

Students planning to become ministers should consult the Dean concerning a course of study to follow. In general, these students should follow the General College Course, and take elective subjects in History, Sociology, English, Philosophy, or Psychology. However, a program will vary considerably for individual students and their plans for the future.

19. PRE-SOCIAL WELFARE.

Students interested in working toward a degree in Social Welfare should consult the Dean for a planned program. Courses to be scheduled depend upon the four-year college to which the student expects to transfer. In general, students may schedule two full years at Chipola and transfer as juniors.

20. LIBRARY SCIENCE.

Students interested in becoming librarians should consult the Dean for a planned program. In most instances the student who takes work at Chipola will transfer to a four-year college offering the professional courses required for certification as a school of arts and science or a school of education. The student will be enrolled in a school of arts and science or a school of education. The degree in library science is now, in most instances, a graduate degree. Chipola offers the first two years of work applicable toward the baccalaureate degree in either arts and science or education with librarian certification.

21. PRE-VETERINARY MEDICINE.

Students interested in Veterinary medicine should consult the Dean. Chipola offers most all of the required first two years of work except courses in Agriculture. Most students should transfer after two or three semesters at Chipola.

22. PRE-ARCHITECTURE.

Since the first two years of most Architecture curricula require professional courses not offered at Chipola, it is recommended that students working toward this degree spend only two semesters at Chipola. However, in some instances the student may profitably spend four semesters at Chipola. The Dean should be consulted for a planned program.

SPECIALIZED TECHNICAL AND BUSINESS

COURSES OF STUDY

General Information

The courses of study listed below are designed for those students who do not plan to do college work beyond the junior college level. The administration of the college has discovered that there are a large number of students who, for various reasons, will not complete the requirements for a four-year or professional degree. However, it is felt that the student can definitely profit from two years of college education. The aim of the planned programs of study listed below is to help the student to become employable and to become a community leader in this geographical area.

Attention is called to the fact that these courses of study list many of the same subjects contained in the programs planned for those students who plan to earn four-year degrees. There are no separate classes for terminal students; also, there are no specific courses or subjects open only to terminal or university parallel students. However, certain courses are designed primarily for the technical students and are not intended to apply toward the baccalaureate degree program. The arrangement of courses or subjects in the curricula below is specifically for terminal students.

1. DRAFTING AND DESIGN TECHNOLOGY.

This course of study is designed for the students who desire employment as technicians in industry or government service after two years of college.

FRESHMAN YEAR	Sem. Hrs.	SOPHOMORE YEAR	Sem. Hrs.
EN 121-122	8	DRA 201-202	12
MA 115 and 140 or 140 and 150*	6	MA 150 or 205*	3
PHY 121-122	8	HIS 201-202 or POL 211-212	6
DRA 101-102	10	PSY 200	3
MA 200	1	ENG 215	3
OR 100	1	EN 260	2
PE (Required)	2	PE (Required)	2
	<hr/>		<hr/>
	36		31

*Mathematics courses to be scheduled depend upon the student's background and achievement. If qualified to do so, the student should take MA 140, MA 150, and MA 205. If MA 115 is necessary as a prerequisite for MA 140, the student would schedule MA 115, MA 140, and MA 150.

2. ELECTRONICS TECHNOLOGY.

This course of study is designed for the students who desire employment as technicians in industry or government service after two years of college.

FRESHMAN YEAR	Sem. Hrs.	SOPHOMORE YEAR	Sem. Hrs.
EN 121-122	8	MA 150 or 205*	3
MA 115 and 140 or 140 and 150*	6	EL 201-202 and 205	13
PHY 121-122	8	HIS 201-202 or POL 211-212	6
EL 101-102	10	DRA 101	5
OR 100	1	EN 260	2
MA 200	1	PSY 200	3
PE (Required)	2	PE (Required)	2
	<hr/>		<hr/>
	36		34

*Mathematics courses to be scheduled depend upon the student's background and achievement. If qualified to do so, the student should take MA 140, MA 150 and MA 205. If MA 115 is necessary as a prerequisite for MA 140, the student would schedule MA 115, MA 140, and MA 150.

3. ENGINEERING OR MATHEMATICS AIDE.

This course of study is designed for students who desire to obtain employment in industry or government service as engineering or mathematics aides after two years of college.

FRESHMAN YEAR	Stm. Hrs.	SOPHOMORE YEAR	Sem. Hrs.
EN 121-122	8	PHY 201-202*	10
MA 165-166 and 200*	9	MA 255-256*	8
SSC 111-112**	6	ENG 205-206 or DRA 101-102	6-10
PSC 111-112 or CHE 155-156***	6-8	ENG 215	3
PE and OR 100	3	PSY 200	3
		PE (Required)	2
	<hr/>		<hr/>
	32-34		32-36

*Mathematics courses depend upon student's background. If the student is not qualified to take MA 165 on entrance, MA 115 must be scheduled as a prerequisite. Students who are unable to schedule the MA 165-166 courses may schedule MA 140, MA 150, and MA 205. A minimum of 15 semester hours is required, but 18 or more semester hours are recommended. Students who do not take Calculus (MA 255-256) must schedule MA 140, MA 150, MA 205, and MA 220. If Calculus is not scheduled, PHY 121-122 must be substituted for PHY 201-202.

**HIS 201-202 or POL 211-212 may be substituted.

***PSC 111-112 is recommended unless student has special interest in Chemistry.

4. GENERAL BUSINESS.

The curriculum outlined below is designed for students who plan to enter general business occupations after two years of college.

FRESHMAN YEAR	Sem. Hrs.	SOPHOMORE YEAR	Sem. Hrs.
EN 121-122	8	HU 211-212	6
Mathematics*	6	ACC 201-202	6
BUS 125	3	EC 205-206	6
SSC 111-112	6	BUS 251-252	6
BUS 101-102 or Electives**	4	BUS 225	3
HE 125	3	PSY 200 or 205	3
PE and OR 100	3	PE (Required)	2
	<hr/>		<hr/>
	33		32

*MA 115 and 118 will meet the minimum requirements. Other courses such as MA 140, MA 210, and MA 220 are recommended if the student has the necessary background.

**Although this curriculum is not designed for clerks or typists, certain typewriting skills are essential. If student already possesses typewriting skills, BUS 230 (Secretarial Machines) may be scheduled. In most cases at least one semester of typewriting will be necessary. BUS 261-262 are recommended if the class schedule permits.

5. LIBERAL ARTS-SECRETARIAL.

This curriculum is designed for those students who desire to enter employment as a secretary after two years of college work.

FRESHMAN YEAR	Sem. Hrs.	SOPHOMORE YEAR	Sem. Hrs.
EN 121-122	8	HU 211-212	6
BUS 101-102 or Electives*	4-6	ACC 201-202	6
BUS 111-112 or Electives*	6	BUS 251-252 or EC 205-206	6
SSC 111-112	6	BUS 215 and 230**	5
MA 115	3	BUS 225 and 240**	6
PE and OR 100	3	PE (Required)	2
Electives*	3	Elective*	3
	<hr/>		<hr/>
	33-35		34

*Exemption examinations are provided in typewriting and shorthand so that elementary subjects will not be repeated and more advanced subjects may be scheduled. Students with two years of both typewriting and shorthand in high school may be eligible to begin with BUS 215 and BUS 230; if so, electives should be scheduled instead of beginning and intermediate courses. Recommended electives include MA 118 and either EC 205-206 or BUS 251-252; other recommended electives include HE 125 and PSY 200 or 205.

**BUS 261-262 may be substituted for any two of these courses.

6. ONE YEAR STENOGRAPHIC.

This curriculum is designed for students who plan to seek clerical or stenographic employment after one year of college. It does not lead to the Associate in Arts diploma unless the student subsequently re-enrolls and follows the Liberal-Arts-Secretarial curriculum.

FRESHMAN YEAR	Sem. Hrs.	SOPHOMORE YEAR
EN 121-122	8	Students completing this curriculum
BUS 111-112 or Electives*	6	who decide to attend for a second year
BUS 102**	2	should follow the Liberal Arts-Secretarial curriculum.
ACC 201	3	
BUS 230 and 240	5	
BUS 125	3	
MA 115	3	
PE and OR 100	3	
	<hr/>	
	33	

*Shorthand courses to be pursued depends on work completed in high school. Some students may be able to begin with BUS 112; if so, BUS 215 may be scheduled.

**Students pursuing this curriculum should have had not less than one year of typewriting in secondary school. Therefore, only Advanced Typewriting should be needed.

7. ONE YEAR DATA PROCESSING.

This course of study is designed for the students who desire employment in this area of business or government service after one year in college.

FRESHMAN YEAR	Sem. Hrs.	SOPHOMORE YEAR
EN 121-122	8	Students completing this curriculum
ACC 201-202	6	who decide to attend for a second year
BUS 261-262	6	should follow the Liberal Arts-Secretarial Curriculum.
BUS 225 or 240*	3	
BUS 230*	2	
MA 115	3	
BUS 125	3	
OR 100 & PE	3	
	<hr/>	
	34	

*Basic skills in Typewriting are assumed. However, if the student does not have these skills, BUS 102 or BUS 101 and 102 must be scheduled in lieu of BUS 225, 230 or 240.

ADULT DIVISION COURSES OF STUDY

The Adult Division offers non-college level courses of study in the areas of General Continuation High School, Business Education, and Licensed Practical Nursing.

The Adult Division also offers short, non-credit courses and special interest courses on demand.

For full information concerning all aspects of Adult Division work interested students should contact Mr. W. C. Burdeshaw, Director of Adult Division.

COURSE OFFERINGS

GENERAL INFORMATION

The following are the official catalog course abbreviations used by Chipola Junior College:

ACC (Accounting)	MA (Mathematics)
ART (Art)	MU (Music)
BSC (Biological Science)	NSC (Normal Science)
BUS (Business)	OR (Orientation)
CHE (Chemistry)	PE (Physical Education)
DRA (Drafting)	PHI (Philosophy)
EC (Economics)	PHO (Photography)
ED (Education)	PSC (Physical Science)
EL (Electronics)	PHY (Physics)
EN (English)	POL (Political Science)
ENG (Engineering)	PSY (Psychology)
FOR (Forestry)	RC (Reading Clinic)
GEO (Geography)	SSC (Social Science)
HE (Health)	SOC (Sociology)
HIS (History)	SPA (Spanish)
HU (Humanities)	SPE (Speech)
JOU (Journalism)	

Catalog numbers ending with the numeral (1) indicate that the course is ordinarily to be considered as the first part of a continuation course consisting of two semesters' work; the catalog number of the second part of the course ends with the numeral (2). However, granting credit in these courses is not necessarily dependent upon completing the sequence.

Courses numbered 100 through 199 are primarily for Freshmen; courses numbered 200 through 299 are primarily for Sophomores. However, there are no restrictions concerning taking certain courses except the noted prerequisites. In general, courses requiring no prerequisites are open to all students regardless of the catalog number.

The letter M following the course number on the permanent record or transcript indicates a modification of the course as described in the catalog. This modification consists of a shortening of the course so far as semester hours credit is concerned. Thus, EN 121M denotes a modification of that course for which less than 4 semester hours credit is allowed.

The figures 1, 2, 3, or D, in parentheses, following the descriptive title of the course indicate when the course is to be offered. (1) denotes offered during the Fall semester; (2) denotes Spring semester; (3) denotes Summer Session; and (D) denotes offered on demand. The College reserves the right to withdraw any course for which demand seems insufficient. Also, the figures designating when a course is to be offered are not to be construed as a guarantee on the part of the college.

Accounting

ACC 201. Elementary Accounting. (1)

Accounting 201-202 is an introductory course designed to provide basic practice in business practice and accounting. The course includes the theory of modern accounts, and the procedure of recording and reporting business transactions. Prerequisite: Consent of the department; either MA 115 or 140 will ordinarily be required. 3 semester hours credit.

ACC 202. Elementary Accounting. (2)

The second half of the course 201-202. Prerequisite: ACC 201. 3 semester hours credit.

Art

ART 111. Introductory Drawing. (1)

Graphic study of the structure, movement, and rhythm of the human figure as it relates to drawing graphic expression. Four hours lecture and studio per week. 2 semester hours credit.

ART 112. Introductory Drawing. (2)

A continuation of ART 111 with emphasis placed upon spatial description through perspective and other means with greater exploration of the drawing processes through mixed technique. Prerequisite: ART 111 or consent of instructor. Four hours lecture and studio per week. 2 semester hours credit.

ART 121. Introduction to Two Dimensional Design. (1)

The elements and principles of design as applied to the two dimensional plane. Applied problems to the solution of two dimensional design through various media. Four hours laboratory per week. 2 semester hours credit.

ART 122. Introduction to Three Dimensional Design. (2)

The elements and principles of design as applied to the third dimension. Applied problems to the solution of three dimensional design through various media. Prerequisite: ART 121 or consent of department. Four hours laboratory per week. 2 semester hours credit.

ART 131. Introduction to Ceramics. (1)

Study of the nature of clays and glazes. Design and construction of pieces through hand, mold, and wheel methods; study of the elementary processes involved in firing and glazing. Four hours studio per week. 2 semester hours credit.

ART 132. Introduction to Ceramics. (2)

A continuation of ART 131 with further study and practice in designing and constructing ceramics wares and greater emphasis upon the chemistry of glazes and various clay bodies. Prerequisite: ART 131 or consent of instructor. Four hours studio per week. 2 semester hours credit.

ART 150. The Purposes of Art. (1)

An investigation into the origin and development of the visual arts as an integral expressive made of man, individually and collectively. Particular emphasis is placed upon uses of art in expression, communication, and exploration of human ideas and values. 3 semester hours credit.

ART 160. The Elements and Principles of Art. (2)

An investigation into the fundamental principles of visual organization: line, shape, plane, mass, color, texture and space. Particular emphasis is placed upon the evolution and role of these elements in the various art forms, their significance technically, and their expressive role in the achievement of form. 3 semester hours credit.

ART 211. Color and Pictorial Composition. (1)

Training in the problems of spatial organization through line, planes, color, light, motion and volume. Oil or casien is the principal media. Prerequisite: ART 112 or consent of the instructor. Four hours studio per week. 2 semester hours credit.

ART 212. Color and Pictorial Composition. (2)

Problems of pictorial composition are more thoroughly studied with greater emphasis upon individual creativity and invention. Prerequisite: ART 211 or consent of instructor. Four hours studio per week. 2 semester hours credit.

Biological Science**BSC 111. General Biology. (1, 2, 3)**

General Biology is a two semester introductory course for non-science majors or science majors who had a weak secondary school background. BSC 111 emphasizes the origin of life; the structure of protoplasm; the nature of cells; the general organization of plants and animals; and the physiology of and structure associated with respiration and photosynthesis. Two hours lecture and two hours laboratory per week. 3 semester hours credit.

BSC 112. General Biology. (1, 2, 3)

The second semester of General Biology emphasizes the regulation of the internal environment; reproduction and development; heredity; ecology and evolution, its mechanism and results. Prerequisite; BSC 111 or consent of department. Two hours lecture and two hours laboratory per week. 3 semester hours credit.

BSC 205. Human Physiology. (D)

The course deals with the structure and function of human organs, the function of the endocrines and the interrelationship of the organs. Prerequisite: BSC 111-112 or consent of the department. 3 semester hours credit.

BSC 210. General Botany. (2)

This course is designed primarily for majors in Biological Science or Forestry. It is an introductory course dealing with the nature of plants and classification with study of representative life cycles. Special emphasis is placed on the structure and physiology of flowering plants. Prerequisite: BSC 111 or consent of department. Two hours lecture and four hours laboratory or field per week. 4 semester hours credit.

BSC 220. General Zoology. (1)

This course is designed primarily for majors in Biological Science, or for related fields needing one course in Zoology. It is an introductory course dealing with protoplasm; animal cells; structure, function embryology and evolutionary relationship of representatives of the major phyla. Prerequisite: BSC 111 or consent of department. Two hours lecture and four hours laboratory per week. 4 semester hours credit.

Business**BUS 101. Elementary Typewriting. (1)**

An introductory course for students with no previous instruction in typewriting who desire a knowledge of basic keyboard skills and fundamental application. Five hours laboratory per week. 2 semester hours credit.

BUS 102. Advanced Typewriting. (2)

Letters, business papers, reports, and speed development. Prerequisite: BUS 101 or equivalent. Five hours laboratory per week. 2 semester hours credit.

BUS 111. Gregg Shorthand. (1)

An introductory course in the principles of Gregg's simplified shorthand, including dictation and transcription. Dictation, 60 words per minute. 3 semester hours credit.

BUS 112. Shorthand Dictation and Transcription. (2)

A continuation of BUS 111 with increased practice in dictation and transcription. Dictation at 100 words per minute; transcription at 30 words per minute. Prerequisite: BUS 111 or one year of high school shorthand. 3 semester hours credit.

BUS 125. Introduction to Business (1, 2)

A survey course designed to acquaint the student with the terminology, organization, and function of the American business system. Topics covered in this course include economic orders or systems, types of business ownership and control, consumer finance, financial institutions, advertising, wholesaling, retailing, insurance, and employee selection and training. This course is primarily for Freshmen, and it is not open to students who have previously completed EC 205 or 206. 3 semester hours credit.

BUS 215. Advanced Shorthand Dictation and Transcription. (1)

An advanced course with emphasis on proficiency and mailable transcripts. Minimum goals: dictation at 120 words per minute; transcription at 40 words per minute. Prerequisite: BUS 112 and BUS 102, or equivalent. 3 semester hours credit.

BUS 225. Business Correspondence. (2)

Practice in writing business letters and elementary report writing. Prerequisite: English 121. 3 semester hours credit.

BUS 230. Secretarial Machines. (1)

Practice in use of duplicating, voice recording, adding and modern computing machines. Prerequisite: BUS 102 or equivalent. Five hours laboratory per week 2 semester hours credit.

BUS 240. Office Practice. (D)

A course designated to integrate the typewriting, transcription, and English skills essential to the secretary. A setting will be provided for studying the secretary's personality and duties, such as: filing, telephone techniques, meeting callers, locating information, mail handling, and actual office experience. Prerequisites: BUS 215, BUS 230, or consent of department. 3 semester hours credit.

BUS 251. Principles of Business Law. (D)

The definition of law and its administration; the law of contracts, negotiable instruments, principal and agent, employer and employee, bailments and carriers. 3 semester hours credit.

BUS 252. Principles of Business Law. (D)

The legal relations of the surety and guarantor, sales, mortgages, insurance, property, landlord and tenant, deeds of conveyance, partnership, corporations, and bankruptcy. Prerequisite: BUS 251. 3 semester hours credit.

BUS 261. Introduction to Data Processing. (1)

Basic methods, techniques and systems of manual, mechanical and electronic data processing. The course covers the history and development of data processing, manual and machine accounting equipment and systems, punched card data processing, punched tape or integrated data processing, and electronic or automatic data processing. Prerequisite: Consent of the department. 3 semester hours credit.

BUS 262. Data Processing Machines. (2)

Basic operation and control of pre-data processing machines; control panel wiring and programming of data processing machines. Prerequisite: BUS 261 or consent of department. 3 semester hours credit.

Chemistry**CHE 100. Introductory Chemistry. (1)**

An introductory course designed for students who are not prepared to take CHE 155 as a first college course. Corequisite: A mathematics course (MA 115, 140, or 165). Two hours lecture and two hours laboratory per week 3 semester hours credit.

CHE 155. General Chemistry. (1, 2)

The courses Chemistry 155-156 are designed to fulfill requirements in General Chemistry and Qualitative Analysis for the first year in science, pre-medical, and engineering curricula. The courses include the fundamental principles of Chemistry;

non-metallic elements and their compounds and uses; and qualitative analysis. Prerequisite: CHE 100 (with a grade of C or better) or 1 credit in high school chemistry and satisfactory scores on scholastic aptitude and mathematics tests. MA 140 or 165 is a prerequisite or corequisite. Three hours lecture and three hours laboratory per week. 4 semester hours credit.

CHE 156. General Chemistry and Qualitative Analysis. (2, 3)

The second half of the courses 155-156. Prerequisite: CHE 155. Three hours lecture and three hours laboratory per week. 4 semester hours credit.

CHE 221. Organic Chemistry. (1)

Preparation and properties of various aliphatic and aromatic compounds. Prerequisite: CHE 156. Three hours lecture and three hours laboratory per week. 4 semester hours credit.

CHE 222. Organic Chemistry. (2)

The second half of the course 221-222. Prerequisite: CHE 221. Three hours lecture and three hours laboratory per week. 4 semester hours credit.

Drafting

DRA 101. Drafting I. (1)

A basic, introductory course designed for technical students. Topics include use of instruments, lettering, applied geometry, orthographic projection, auxiliaries and sections, technical sketching, working drawings of details, and assemblies. Corequisite: MA 115 or 140. Two hours lecture and six hours laboratory per week. 5 semester hours credit.

DRA 102. Drafting II. (2)

A continuation of Drafting I with additional topics including axonometric and oblique projection, perspective, intersections and developments, and charts and graphs. Emphasis is placed on the application of these studies and drawings to industry. Prerequisite: DRA 101 or consent of department. Corequisite: MA 140 or 150. Two hours lecture and six hours laboratory per week. 5 semester hours credit.

DRA 201. Specialized Drafting Techniques. (1)

Practical problems in architectural and structural drafting, topographical drawing and mapping, piping, welding, and other specific areas with which the technical draftsman is expected to be familiar. Prerequisite: DRA 102 or consent of department. Corequisite: MA 150 or 205. Ten hours lecture and laboratory per week. 6 semester hours credit.

DRA 202. Machine Design. (2)

A study of gears, cams, belts, friction drives, and the uses of standardized parts; problems in the design of tools, dies, gauges, fixtures, cutters and machine parts. The course includes complete assembly drawings of a small machine together with manufacturing specifications, giving special attention to the design. Field trips will be arranged to augment training. Prerequisite: DRA 102 or consent of department plus MA 150. Ten hours lecture and laboratory per week. 6 semester hours credit.

Economics

EC 205. Principles of Economics. (1, 3)

An introductory course beginning with a discussion of the nature, scope and method of economics, economic concepts, and economic institutions. The course deals primarily with the theories or principles of production, determination of prices, and distribution of income. Credit will be given without taking EC 206, but same is strongly recommended. 3 semester hours credit.

EC 206. Principles of Economics. (2, 3)

This, the second half of the course 205-206, deals primarily with the economic problems of everyday life. Emphasis is given to money and banking, international trade and finance, financial problems of government, labor-management relation-

ship, business cycles and fluctuations, in national income economic security, agricultural problems, and the leading alternatives to capitalism. Prerequisite: EC 205 or consent of the department. 3 semester hours credit.

Education

ED 105. Orientation to Education. (1)

This course is designed to orient the student to the teaching profession. The course is expected to develop an understanding of teaching opportunities, certificate requirements, and personal-professional qualifications for teaching. 3 semester hours credit.

ED 205. Social Basis for Education. (2)

This course is designed to develop an understanding of the relationship of social patterns of home, school and community living in individual growth and development in a democratic society. Prerequisite: Psychology 205. 3 semester hours credit.

Electronics

EL 101. Basic Electrical and Circuit Theory. (1)

An introductory course designed for technical students. The course covers the fundamentals of electricity including the study of electron theory. Ohm's and Kirchhoff's law, resistance, inductance, capacitance, and simple transients. The study is continued in alternating current theory, algebra of complex numbers, power and energy, general series and parallel circuits, tuned circuits, and resonance. Corequisite: MA 115 or 140. Two hours lecture and six hours laboratory per week. 5 semester hours credit.

EL 102. Electron Tubes and Semi-Conductors. (2)

A study of the characteristics of vacuum and gaseous tubes and semi-conductors with emphasis on both theory and laboratory work. Prerequisite: EL 101. Corequisite: MA 140 or 150. Two hours lecture and six hours laboratory per week. 5 semester hours credit.

EL 201. Advanced Electron Tubes and Circuits. (1)

A continuation of EL 102 with theory and laboratory work in electron tubes, transistors and associated circuits. Included is study in radio frequency generation and transmission, communications systems, and filters. Prerequisite: EL 102. Corequisite: MA 150 or 205. Two hours lecture and six hours laboratory per week. 5 semester hours credit.

EL 202. Industrial Electronics. (2)

A study of the application of electron tubes to industrial control circuits, with emphasis on the fundamental principles of electrical machines and their control. Advanced study is made of gaseous tubes and their control circuitry. Consideration is also given to magnetic amplifiers and photo electric devices. Prerequisite: EL 201. Two hours lecture and six hours laboratory per week. 5 semester hours credit.

EL 205. Advanced Electronics. (2)

A study of transmission line theory, velocity, modulation tubes and circuits, microwave and pulse techniques. Prerequisite: EL 201. Five hours lecture and laboratory per week. 3 semester hours credit.

Engineering

ENG 205. Engineering Graphics I. (1)

A basic introductory course covering the use of drafting instruments, lettering, technical sketching, geometric construction, orthographic projection, auxiliary and sectional views, isometric and oblique drawing, and working drawings. Prerequisite: Plane geometry or equivalent plus consent of department; MA 115, 140 or 165 is a corequisite or prerequisite. Six hours lecture and laboratory per week. 3 semester hours credit.

ENG 206. Engineering Graphics II. (2)

A continuation of Engineering Graphics I in which the principles of orthographic projection are applied to solutions of more difficult three dimensional problems. Topics include the space relationship of points, lines, and planes, intersection and development of surfaces and perspective, and their practical application to the problems of engineering. Prerequisite: ENG 205 or equivalent. Six hours lecture and laboratory per week. 3 semester hours credit.

ENG 215. Strength of Materials. (D)

A combination theory and laboratory study of simple stresses and elastic properties of various industrial materials. Included are a study of simple stresses, combined stresses, principle of strain gages and investigation of strength properties of various bolted, riveted and welded connections; and analysis of beam members such as physical properties of sections, shearing stresses, shafting, torsional stresses and deflection. This course is designed for technical students only. Prerequisites: MA 140 and PHY 122. Five hours lecture and laboratory per week. 3 semester hours credit.

English

EN 090. Preparatory English (1, 2)

A non-credit, remedial course that is a prerequisite for English 121 for all students failing to achieve a predetermined score on an English achievement test. The course is designed to prepare those students with inadequate secondary school preparation for the college level communication skills course.—Students for whom this course is required may register for English 121 only after satisfactorily completing the course. No credit.

EN 104. Developmental Reading. (1, 2)

A course designed for those students whose test scores indicate a basic reading skill and who wish to further improve that skill through vocabulary development and speed and accuracy of visual perception. Prerequisite: A score of 50% or better on the Diagnostic Reading Test or successful completion of the non-credit reading clinic. 1 semester hour credit.

EN 121. Communication Skills. (1, 2, 3)

A course concerned with improvement in the skills of reading, writing, speaking, and listening. Effort is made to analyze individual difficulties and to devise corrective practices, exercises and experiences leading to a more effective, confident, and enjoyable use of communication skills. The first semester integrates skills promotion with educational and vocational orientation. 4 semester hours credit.

EN 122. Communication Skills. (1, 2, 3)

A continuation of EN 121. The second semester integrates skills promotion with orientation in literature. Prerequisite: EN 121 or consent of the department. 4 semester hours credit.

EN 211. Survey of English Literature (1)

A survey of English literature from Beowulf to the period of Romanticism. Included are selected works of the principal authors, a study of the historical background, and critical papers at stated intervals. 3 semester hours credit.

EN 212. Survey of English Literature (2)

A survey of English literature from the Romantic writers to the present. Included are selected works of the principal authors, a study of the historical background, and critical papers at stated intervals. 3 semester hours credit.

EN 221. Survey of American Literature (1)

A survey of American literature from the Colonial period through the Civil War. Included are selected works of the principal authors, a study of the historical background, and critical papers at stated intervals. 3 semester hours credit.

EN 222. Survey of American Literature (2)

A survey of American literature from Whitman to the present. Included

are selected works of the principal authors, a study of the historical background, and critical papers at stated intervals. 3 semester hours credit.

EN 250. Advanced Composition. (1, 2)

A sophomore course designed to offer specialized opportunities in advanced types of composition. Conferences and classes are organized around the student's individual needs and interests. Recommended for all majors in English and related fields. Prerequisite: EN 122. 2 semester hours credit.

EN 263. Technical Report Writing. (2)

A course designed for technical and engineering students needing specialized training in writing. The principles of exposition are applied to technical reports, research papers, letters and forms. Clarity and organization plus technical nomenclature are stressed. Prerequisite: EN 122 or consent of department. 2 semester hours credit.

Forestry

FOR 205. Introduction to Forestry. (2)

This course is designed to orient the student to Forestry as a profession. The fundamental underlying principles of the field are stressed. Included are the qualifications, opportunities, and responsibilities of a Forester. 2 semester hours credit.

Geography

GEO 205. World Geography. (1, 3)

This course 205-206 is a study of the relationship between human activities and natural environment. A regional-cultural approach is used and effort is made to correlate the course content with the other social sciences. Credit will be granted without taking 206 but the sequence is recommended. 3 semester hours credit.

GEO 206. World Geography. (2)

The second half of the course 205-206. 205 is not a prerequisite, but the sequence is recommended. 3 semester hours credit.

Health

HE 125. Personal and Community Health Problems. (1, 2, 3)

A course designed to prepare the student for solving personal and community health problems through an understanding of health rules and habits. Emphasis is given to the principles of maintaining and improving individual and community health and organizing these factors for effective daily living. 3 semester hours credit.

History

HIS 105-106-205-206. Current Affairs. (1, 2)

A study of events of the world today based on current periodicals, radio and television. Emphasis is placed on the development of informal judgements about public affairs by the student. Open to all students for a maximum of four semesters. 1 semester hour credit per course.

HIS 121. Western Civilization. (1)

A survey intended as a basic course to give perspective and to trace the development of political, economic, religious, and other cultural institutions and ideas. These phases of man's accomplishments are related to his history from the earliest beginnings to the close of the 17th century. 3 semester hours credit.

HIS 122. Western Civilization. (2)

A continuation of the story of man's development from 1700 to the present. Emphasis is given to showing how modern civilization with its present day problems and conditions has evolved. 3 semester hours credit.

HIS 201. American History to 1865. (1, 3)

A general survey of the development of the United States from the period of discovery and exploration through the Civil War. 3 semester hours credit.

HIS 202. American History Since 1865. (2, 3)

A survey course on the development of the United States from the Reconstruction period to the present. History 201 is not a prerequisite, but is recommended. 3 semester hours credit.

Humanities**HU 211. The Humanities. (1, 2, 3)**

This is an integrated course designed to increase the student's understanding and appreciation of great and vital ideas in western culture through the study of representative materials in art, music, literature, and philosophy. HU 211 deals primarily with our ancient and medieval cultural heritage. No prerequisite, but the course is designed for Sophomore level students. 3 semester hours credit.

HU 212. The Humanities. (1, 2, 3)

A continuation of HU 211. This course deals primarily with representative materials in art, music, literature, and philosophy of the modern period. HU 211 is not a prerequisite, but the sequence is recommended. 3 semester hours credit.

Journalism**JOU 161-162. College Publications. (1, 2)**

A one semester hour per semester course for freshmen, designed to familiarize them with news gathering, newswriting, and the practical skill involved in newspaper work in general and college yearbook production in particular. Class work involves one hour of lecture and discussion and one hour of laboratory work with the 261-262 class. Students will assist the advanced class in the production of college publications. 1 semester hour credit per semester.

JOU 261-262. College Publications. (1, 2)

This is a two semester hour per semester course for students who have completed the 161-162 sequence. Students bear primary responsibility for the production of the *Papoose* (college newspaper) and the *Chijuco* (yearbook). Two hours lecture and one hour laboratory (with 161-162 students) per week. 2 semester hours credit per semester.

Mathematics**MA 115. Fundamentals of Mathematics. (1, 2, 3)**

This is designed as a dual purpose course; it fulfills the minimum general education requirement for students who do not intend to take any additional mathematics; and it serves as a prerequisite course for those students who need additional work in algebra and trigonometry as preparation for more advanced courses. The course covers such topics as charts and graphs, ratio and proportion, percentage, linear and quadratic equations, trigonometry, and an introduction to logic and modern mathematics. Not open for credit to students who have completed any college mathematics course other than MA 118. Three semester hours credit.

MA 118. Business Mathematics. (D)

This course deals with mathematics used in business by the average person. Topics include short cuts in arithmetic, percentage, simple and compound

interest, bank discount, inventory, budget, taxes, installment buying, stocks and bonds, and check writing. This course is designed primarily for the terminal student and is not recommended for university parallel students to satisfy the general education or professional mathematics requirements. Also, it is not recommended for students who expect to earn a degree in business administration. 3 semester hours credit.

MA 140. College Algebra (1, 2)

This is the foundation course in algebra, and it is the prerequisite for more advanced mathematics courses. Scope of the course includes quadratic equations, progressions, binomial theorem, theory of equations, partial fractions, and determinants. This course should not be pursued if student intends to take MA 165-166. Prerequisite: One or more years of high school algebra or MA 115. 3 semester hours credit.

MA 150. Plane Trigonometry. (D)

This course deals with the solution of triangles, trigonometric relations, and functions of any angle, logarithms, and complex numbers. Prerequisite: MA 140 or consent of department. 3 semester hours credit.

MA 165. Integrated Freshman Mathematics. (1, 2)

This is the first half of a two semester course primarily designed to prepare students for the first course in Calculus. The subject matter covered is similar to that which is included in three courses of college algebra, plane trigonometry, and analytic geometry. Material covered is unified by the concept of function and the correspondence between geometrical and numerical relationships. Prerequisite: Consent of the department; in general, an adequate score on an algebra achievement test or MA 115 will be required. 4 semester hours credit.

MA 166. Integrated Freshman Mathematics. (2, 3)

The second half of the course 165-166, dealing chiefly with advanced plane trigonometry and analytic geometry. Prerequisite: MA 165 or equivalent. 4 semester hours credit.

MA 200. Slide Rule. (1)

Instruction and practice in the use of the slide rule. Recommended for all pre-engineering students and mathematics or science majors. 1 semester hour credit.

MA 205. Plane Analytic Geometry. (D)

Coordinate geometry in two dimensions of straight lines, circles, parabolas, ellipses, and hyperbolas, with transformation and tangents; polar coordinates; transcendental curves. Prerequisite: MA 150 or equivalent. 3 semester hours credit.

MA 210. Mathematics of Finance. (D)

Application of elementary algebra to commercial problems; simple interest, discount, compound interest, annuities, amortization, depreciation, insurance, and valuation of bonds. Prerequisite: MA 115; either MA 140 or 165 is recommended. 3 semester hours credit.

MA 220. Elementary Statistics. (2)

An introduction to elementary statistical principles. Emphasis is placed upon techniques and interpretation of data. Prerequisite: MA 115; either MA 140 or 165 is recommended. 3 semester hours credit.

MA 255. Calculus. (1)

A study of the differentiation and integration of algebraic and transcendental functions of one variable, methods of integration, the definite integral, and the mean value theorem. Prerequisite: MA 166 or equivalent. 4 semester hours credit.

MA 256. Calculus. (2)

This course includes integration as a process of summation applied to area, volume, work and pressure; integration by partial fractions and reduction formulas, differentiation, and multiple integrals. Prerequisite: MA 255. 4 semester hours credit.

MA 295. Differential Equations. (D)

The first course in ordinary differential equations. Prerequisite: MA 256. 3 semester hours credit.

Music

MU 101. Music Theory. (1)

A study of the fundamentals of musical notation, understanding of simple rhythms, key signatures, intervals, and some work in simple harmonization through connecting primary triads; and a beginning study of sight singing and rhythmic and melodic dictation. Included are written assignments, class drills, and some elementary keyboard work. 3 semester hours credit.

MU 102. Music Theory. (2)

A study of the more advanced or difficult rhythms and intervals; harmonization will include freer voice leading using primary triads, a study of voice movements, and development of taste in good voice leading in writing; a more intense study of dissonance and consonance and additional chord usage for colorful harmonizations. Included are an intensification of sight singing and harmonic and rhythmic dictation, and advanced keyboard work. Prerequisite: MU 101. 3 semester hours credit.

MU 105-106-205-206. Glee Club*. (1, 2)

Two or more hours of mixed chorus per week. Prerequisite: Consent of department. 1 semester hour credit per course.*

MU 107-108-207-208. Men's Glee Club*. (1, 2)

Two or more hours of choral work per week for selected male singers. Prerequisite: Consent of department. 1 semester hour credit per course.*

MU 109-110-209-210. Women's Glee Club*. (1, 2)

Two or more hours of choral work per week for selected female singers. Prerequisite: Consent of department. 1 semester hour credit per course.*

MU 115-116-215-216. Instrumental Ensemble.* (1, 2)

Class instruction for developing instrumental ensembles and solos for concert performances. Prerequisite: Consent of department. 1 semester hour credit per course.*

*These courses are classified as Music Organizations. Although any student who gains consent of the department may enroll for any of these courses, the maximum credit for music organization courses applicable toward graduation is 4 semester hours. Therefore, a student could earn credit for 4 to 8 semester hours in Glee Club and Men's and Women's Glee Club, plus 4 semester hours in Instrumental Ensemble; but only 4 semester hours would count toward graduation.

MU 121. Sight Singing. (D)

A study of sight-singing techniques with emphasis on diatonic materials. Prerequisite: Consent of department. Two hours lecture and laboratory per week. 1 semester hour credit.

MU 122. Sight Singing. (D)

A continuation of MU 121. Prerequisite: MU 121 or consent of department. Two hours lecture or laboratory per week. 1 semester hour credit.

MU 151-152-251-252. Applied Music. (D)**

Private instruction in voice or instrument to satisfy requirements for applied minor. Prerequisite for each course is consent of department based on audition. One one-half hour private lesson per week plus practice. 1 semester hour credit per course.**

MU 161-162-262. Applied Music. (D)**

Private instruction in voice or instrument to satisfy requirements for applied major. Prerequisite for each course is consent of department based

on audition. Two one-half hour private lessons per week plus practice. 2 semester hours credit per course.**

**Applied music instruction will be offered in voice, piano, and organ. Voice majors should schedule the 161-162-261-262 series in voice, and the 151-152-251-252 series in piano or organ; piano or organ majors should schedule the 161-162-262 series in piano or organ, and the 151-152-251-252 series (if any) in voice. Students who are below the Freshman level in accomplishment will be required to take private instruction without credit. In such cases the course designation will be 051-052 or 061-062.

MU 201. Music Theory. (D)

A study of accessory and embellishment tones in writing, with emphasis upon mastery of good voice leading in original harmonizations of Bach chorale melodies; an advanced study in rhythms, and an intensification of sight singing and aural dictation. There is some keyboard work in a study of modulations; emphasis is on simple original compositions and arrangements. Prerequisite: MU 102 or consent of department. 3 semester hours credit.

MU 202. Music Theory. (D)

A continuation of MU 201 with emphasis on original work. Assignments will be made for original solos, anthems, and other compositions. Sight singing proficiency training is continued, and there is an intensification of rhythmic and harmonic dictation. A program of original compositions is required. Prerequisite: MU 201. 3 semester hours credit.

MU 221. Sight Singing. (D)

A continuation of MU 121-122. Prerequisite: MU 122 or consent of department. Two hours lecture and laboratory per week. 1 semester hour credit.

MU 222. Sight Singing. (D)

A continuation of MU 221. Prerequisite: MU 221 or consent of department. Two hours lecture and laboratory per week. 1 semester hour credit.

MU 230. Introduction to History of Music. (D)

A history of musical expression in relation to the background of the life and art which created it. This course is designed to develop a more intelligent understanding of music in civilization today. The course is designed primarily for music majors, but is open to other students with the consent of the department. 3 semester hours credit.

MU 240. Community Music. (1, 2)

The techniques, procedures and materials used in building community and recreational music programs with special emphasis given to song leading and church music. This course is designed for both music majors and non-majors, but proficiency in music is required. Prerequisite: Consent of department. 2 semester hours credit.

MU 251. Opera Workshop. (D)

A practical study of the techniques of producing musical stage plays including operas and operettas. Instruction is integrated with actual productions. Participation in such activities does not insure credit until satisfactory completion of such work as shall merit credit at the discretion of the director. Prerequisite: Consent of the department. 2 semester hours credit.

MU 252. Opera Workshop. (D)

A continuation of MU 251 with emphasis on advanced productions. Prerequisite: MU 251 or consent of department. 2 semester hours credit.

Natural Science

NSC 295. Intermediate Natural Science. (D)

The courses NSC 295-296 are designed primarily for junior high school and elementary science teachers who need additional academic preparation in the area. The basic fundamentals or introductory college courses in Biology,

Chemistry, Physics, and Earth-Space Science are reviewed; advanced work in these areas emphasizes recent advances and the relationship of recent advances to the school curriculum. NSC 295 deals primarily with Biology and Chemistry. Prerequisite: Consent of the department; at least six semester hours credit in one or more courses in the natural science area will be required. Three or more hours of lecture and laboratory per week. 3 semester hours credit.

NSC 296. Intermediate Natural Science. (D)

This course deals primarily with Physics and Earth-Space Sciences. It is one part of the courses designed for junior high school and elementary science teachers, but NSC 295 is not a prerequisite. Prerequisite: Consent of the department; at least six semester hours credit in one or more courses in the natural science area will be required. Three or more hours of lecture and laboratory per week. 3 semester hours credit.

Orientation

OR 100. Freshman Orientation. (1, 2)

The purpose of this course is to provide the entering student with the information necessary for successful adjustment to college life, work, and activities. Attention is given to study habits, vocational choice, social usage, courtship and marriage, and the development of a well-rounded philosophy of life. Required of all entering students. 1 semester hour credit.

OR 200. Sophomore Orientation. (2)

A non-credit course meeting once per week for six or more weeks. This course is designed to aid the student with problems concerning transfer to four-year colleges and/or entry into employment.

Physical Education (Required)

Note: All entering Freshmen are required to take the basic course (PE 110, Physical Education in Modern Living). In addition to this course, students are required to take a minimum of two additional courses from among those involving individual and dual recreational activities (PE 120, PE 130, PE 140). Students may take a maximum of one course involving team sports (PE 143, PE 144, PE 145, PE 146) to complete the required four semester hours in Physical Education. Certain students who fail to make a satisfactory score on a youth fitness test (to be given in connection with PE 110) will be required to take PE 183 or 184. Except for those courses open only to men or only to women, any student may take any course as an elective.

In summary, all students must take PE 110 and two courses from among PE 120, PE 130, and PE 140. The fourth course may be any of those listed below, except that certain students may be required to take PE 183 or PE 184.

PE110. Physical Education in Modern Living. (1, 2)

This is a coeducational course required of all entering Freshmen. It is designed, through a series of lectures and appropriate activities, to orient the students to a realistic program of physical activities that is enjoyable and wholesome and has a carry-over value for post-college years. Two hours lecture or laboratory per week. 1 semester hour credit.

PE 120. Badminton and Archery. (1, 2)

A coeducational course that includes a brief history of each sport followed by instruction and practice in the fundamental techniques. Two hours laboratory per week. 1 semester hour credit.

PE 130. Golf and Tennis. (1, 2)

A coeducational course that includes a brief history of each sport followed by instruction and practice in the fundamental techniques. Two hours laboratory per week. 1 semester hour credit.

PE 140. Social, Folk, and Square Dancing. (1, 2)

A coeducational course that involves instruction and practice in social, folk, and square dancing. Two hours laboratory per week. 1 semester hour credit.

PE 143. Volleyball and Tag Football for Men. (1, 2)

Instruction and practice in the fundamentals of volleyball and tag football. Two hours laboratory per week. 1 semester hour credit.

PE 144. Speedball and Basketball for Women. (1, 2)

Instruction and practice in the fundamentals of speedball and basketball. Two hours laboratory per week. 1 semester hour credit.

PE 145. Softball and Basketball for Men. (1, 2)

Instruction and practice in the fundamentals of softball and basketball. Two hours laboratory per week. 1 semester hour credit.

PE 146. Softball and Volleyball for Women. (1, 2)

Instruction and practice in the fundamentals of softball and volleyball. Two hours laboratory per week. 1 semester hour credit.

PE 183. Conditioning and Apparatus Activities for Men. (1, 2)

A course designed to help the student develop and maintain physical efficiency through a variety of exercises and activities. Two hours laboratory per week. 1 semester hour credit.

PE 184. Conditioning and Apparatus Activities for Women. (1, 2)

A course designed to help the student develop and maintain physical efficiency through a variety of exercises and activities. Two hours laboratory per week. 1 semester hour credit.

Physical Education (Professional)

Note: Although these courses are designed primarily for students who desire to become physical education teachers or recreation directors, they are open to other students as electives. PE 105 and 220 are coeducational; PE 206, 207, and 240 are open only to men.

PE 105. Introduction to Recreation. (3)

This course is designed to acquaint the student with the field of recreation. Included is an examination of recreation positions in industries and other commercial outlets, municipalities, public institutions, churches, hospitals, and private agencies. 1 semester hour credit.

PE 206. Theory and Practice of Basketball. (1)

Skills, rules, and team play in baseball. Three hours lecture and laboratory per week. 2 semester hours credit.

PE 207. Theory and Practice of Baseball. (2)

Skills, rules, and team play in basketball. Three hours lecture and laboratory per week. 2 semester hours credit.

PE 220. Introduction to Physical Education. (2, 3)

This course is designed primarily for physical education majors who plan to teach. It includes the historical background, fundamental concepts, program content, qualifications training, and professional opportunities in the field. 2 semester hours credit.

PE 240. Sports Officiating. (D)

Lecture and discussion of rules along with practice in techniques of officiating various sports through laboratory experience. Student must be available for off-campus officiating after school hours. Three hours lecture-laboratory per week. 2 semester hours credit.

Philosophy

PHI 185. Practical Logic. (1, 2, 3)

Reflective thinking with special attention to the detection of fallacies, semantic difficulties and propaganda techniques. The course is designed to develop the ability to think with greater accuracy and to evaluate the thinking of others; both the inductive and the deductive aspects of logic are included. 3 semester hours credit.

PHI 205. Elementary Ethics. (2)

This course deals with the origin and development of morals. Emphasis is given to an analysis of values and moral concepts, and the formation of a moral philosophy which will serve as the basis for meeting present day problems. 3 semester hours credit.

Photography

PHO 150. Elementary Photography. (D)

This course is designed to provide a basic understanding of composition and photographic technique. Skills to be learned include how to handle a camera, select subjects, develop film, print pictures and make enlargements. Actual application of the principles involved is included. Two hours lecture and two hours laboratory per week. 3 semester hours credit.

Physical Science

PSC 111. Survey of Physical Science. (1, 2, 3)

Physical Science 111-112 are courses designed primarily for the non-science major. The aim of these courses is to give the student an elementary knowledge and appreciation of his physical environment. 111 is devoted primarily to elementary physics and meteorology. Subject matter is handled by lecture, class discussion, and demonstration. Credit will be allowed for 111 without taking 112 but same is strongly recommended. Open to all students except that no credit will be allowed if course is taken after completion of any course in physics. 3 semester hours credit.

PSC 112. Survey of Physical Science. (1, 2, 3)

This course deals primarily with an elementary study of chemistry, geology, and astronomy. Open to all students except that no credit will be allowed if course is taken after completion of any course in Chemistry. 3 semester hours credit.

Physics

PHY 121. General Physics. (1)

The courses Physics 121-122 are intended primarily for students who are not majoring in physics or engineering. PHY 121 deals with mechanics, heat, and sound; and practical laboratory application. Three hours lecture and two hours laboratory per week. Corequisite: MA 115, 140 or 165. 4 semester hours credit.

PHY 122. General Physics. (2)

The second half of the course 121-122 deals with electricity, magnetism, and light; and practical laboratory application. Prerequisite: PHY 121; Corequisite: MA 140, 150, or 166. Three hours lecture and two hours laboratory per week. 4 semester hours credit.

PHY 201. General Physics. (1)

The courses Physics 201-202 are designed primarily for physics majors and engineering students. PHS 201 deals chiefly with mechanics, heat, and sound; and practical laboratory application. Prerequisite: MA 166 or equivalent. Corequisite: MA 255. Three hours lecture and four hours laboratory per week. 5 semester hours credit.

PHY 202. General Physics. (2)

The second half of the course 201-202 deals with electricity, magnetism, light, and nuclear physics; and practical laboratory application. Prerequisite: PHY 201. Corequisite: MA 256. Three hours lecture and four hours laboratory per week. 5 semester hours credit.

Political Science

POL 211. American Federal Government. (1)

This course is a study of our Federal Government designed to give the student an understanding of its organization, principles and actual workings. The relationship of the individual to government is emphasized. Credit will be given without taking Political Science 212 but same is recommended. 3 semester hours credit.

POL 212. State and Local Government. (2)

This is a study of the form or organization, the functions, and the operations of state and local governments in the United States. Particular attention is given to state, county, and city government in Florida. This course is designed to be as practical as possible and includes actual participation of county and city officials. Political Science 211 is not a prerequisite, but is recommended. 3 semester hours credit.

Psychology

PSY 115. Psychology of Personal Adjustment. (1, 2)

This is an elementary course in Psychology designed to aid the individual in his personal adjustment through introspection. The course is designed primarily for the student who does not plan to do further work in the field of psychology. Also, it is not a prerequisite course for any advanced course in psychology. Not open to any student who had previously completed any course in psychology. 3 semester hours credit.

PSY 200. Human and Industrial Relations. (D)

A study of the patterns of human behavior that lead to effective work relationships in a business situation. Included are an analysis of the basic factors that shape the industrial environment and influence the human relations that develop within this environment; and the application of psychological principles to the business problems of leadership and motivation, productivity and morale, and personnel and industrial relations policy. This course is designed primarily for technical and other terminal students, and is not the prerequisite for advanced course in Psychology. 3 semester hours credit.

PSY 205. General Psychology. (1, 2, 3)

This course is designed to give the student an adequate foundation in the field of psychology; to provide an understanding of human behavior and to enable the student to adapt himself to his physical and social environment. This is the prerequisite course for all advanced courses in psychology. Not open to first semester Freshmen. 3 semester hours credit.

PSY 206. Child Psychology. (1, 3)

The application of psychology to an objective study of the pre-adolescent child. The physical, psychological, and social development of the child, and the relationship of the child's environment to his development is studied. Special problems of child training in the family and of social adjustment at school are discussed. Prerequisite: Psychology 205. 3 semester hours credit.

PSY 207. Educational Psychology. (2)

The application of psychology to the problems of education. This is a study of the individual during the school years from the standpoint of physical growth and mental growth with special attention to the relationship of the school and the individual's concept of learning, attitude, personality, and mental health. Prerequisite: Psychology 205. 3 semester hours credit.

PSY 208. Adolescent Psychology. (D)

The application of psychology to an objective study of the adolescent. The course includes a detailed study of the physical and social development of the adolescent, and the relationship of environment to the individual's adjustment. Also special problems and adjustment mechanisms are studied. Prerequisite: Psychology 205. 3 semester hours credit.

Reading Clinic

RC 091. Reading Clinic. (1, 2)

A non-credit course designed to develop the reading proficiency of the entering students whose test scores reveal a lack of the reading skills necessary for successful college study in all areas. The course is required of all students whose test scores reveal an inadequacy, and is recommended for all students who desire to improve reading skills.

RC 092. Reading Clinic. (2)

A continuation of RC 091 designed for those students who failed to remedy deficiencies in reading in one semester.

Social Science

SSC 111. Survey of the Social Sciences. (1, 2, 3)

The primary objective of the integrated social science course 111-112 is to give students a clear concept of our society and its major problems. The greater portion of the course deals with the various social institutions. It is intended that this course will enable the student to gain some insight into the stubborn character of major social issues and to nourish and motivate their critical thinking rather than to supply them with a tailor-made philosophy. 3 semester hours credit.

SSC 112. Survey of the Social Sciences. (1, 2, 3)

The second half of the course 111-112. See above description. 3 semester hours credit.

SSC 220. Political and Economic Systems (D)

A brief course dealing with contemporary world political and economic systems; their origin, development, and current practices. Emphasis is placed on an understanding of the basic philosophies of capitalism and communism. 3 semester hours credit.

Sociology

SOC 110. Preparation for Marriage. (1, 2)

A historical and comparative study of courtship, mate selection, engagements, marriage and child rearing with the view of contribution toward successful marriage and parenthood. Open to all students. 3 semester hours credit.

SOC 150. Introductory Sociology. (1, 2)

This is a general study of institutional development, social determinants, social processes, and cultural growth. The aim of the course is to help the student understand how our present society evolved, how it functions, and the trend of its future development. Considerable time is devoted to the study of the social problems of today and to the application of the sociological principles involved. The course is designed to serve both as an introduction to further courses in the field and as a practical course for terminal students. 3 semester hours credit.

SOC 205. Marriage and the Family. (2)

A study of the origin and development of the family; the role of marriage and the family in contemporary civilization; the family life cycle; and successful marriage and parenthood. Prerequisite: SOC 110 or 150, or consent of the department. 3 semester hours credit.

Spanish

SPA 101 Elementary Spanish. (1)

The essentials of Spanish, with emphasis on oral expression. Open to those students who enter college without any or with only one year of high school Spanish. 3 semester hours credit.

SPA 102. Elementary Spanish. (2)

A continuation of SPA 101 with emphasis on both oral and written expression. Prerequisite: SPA 101 or equivalent. 3 semester hours credit.

SPA 201. Intermediate Spanish. (D)

The course 201-202 includes the reading of selections from modern prose authors; a review of grammatical principles; and further study of composition and conversation. Prerequisite: SPA 102 or two years of high school Spanish. 3 semester hours credit.

SPA 202 Intermediate Spanish. (D)

The second half of the course 201-202. Prerequisite: SPA 201. 3 semester hours credit.

Speech

SPE 105. Fundamentals of Speech. (1,3)

An introductory course emphasizing effective voice production, clear sound and modification, acceptable pronunciation, rhythm and phrasing, and individual needs. A study of the International Phonetic Alphabet is included. 3 semester hours credit.

SPE 106. Oral Interpretation. (2)

A continuation of SPE 105 with emphasis on integration of vocal skills. Oral interpretation of major forms of prose, poetry and drama; and a study of foreign dialects for oral interpretation and dramatic presentation. Prerequisite: SPE 105 or consent of department. 3 semester hours credit.

SPE 115. Introduction to Dramatic Art. (1)

This course includes a brief historical survey of plant and scenic styles, and a sampling of dramatic literary developments. Participation in class productions is required. 2 semester hours credit.

SPE 116. Introduction to Dramatic Art. (2)

A continuation of SPE 115 with emphasis on class productions. Participation in productions is required. Prerequisite: Consent of department. 2 semester hours credit.

SPE 205. Effective Speaking. (1, 2, 3)

A fundamental course dealing with the preparation and presentation of speeches for business, social and professional occasions. Speech principles and problems will be dealt with in regard to the development and use of the speaking voice and pronunciation. Prerequisite: EN 121. 3 semester hours credit.

SPE 215. Fundamentals of Acting and Stagecraft. (1)

The course includes practical training in dramatic interpretations and characterizations. Of primary consideration is the use of body and voice. The stagecraft includes scenery, costuming, lighting, and the various technical areas. Emphasis is on class productions and participation is required. Prerequisite: SPE 116 or consent of department. 2 semester hours credit.

SPE 216. Fundamentals of Acting and Stagecraft. (2)

A continuation of SPE 215 with continued emphasis on class productions. Participation is required. Prerequisite: SPE 215 or consent of department. 2 semester hours credit.

SPE 221. Argumentation and Dbate. (1)

The courses SPE 221-222 are designed for those students interested in intercollegiate debating and speech majors. The courses include discovery and use of evidence, reflective thinking and logical reasoning; organization and adaptation of evidence and reasoning to public speaking; discussion and debate situations; methods of argumentation, including case preparation, briefing and logical elements of persuasion. Prerequisite: EN 121 or SPE 105. 2 semester hours credit.

SPE 222. Argumentation and Debate. (2)

A continuation of SPE 221 with emphasis on discussion and debate situations and methods of argumentation. Prerequisite: EN 121 or SPE 105; SPE 221 is strongly recommended. 2 semester hours credit.

SPE 251. Theatre Workshop. (D)

This course is designed to cover any phase of Theatre Art such as acting, designing, staging, lighting, costuming, make-up, history, research, or any combination of these. Instruction is integrated with actual dramatic productions. Participation in such activites does not insure credit until satisfactory completion of such work as shall merit credit at the discretion of the director. Prerequisite: Consent of the department. 2 semester hours credit.

SPE 252. Theatre Workshop. (D)

A continuation of SPE 251 with emphasis on advanced productions. Pre-requisite: SPE 251 or consent of department. 2 semester hours credit.

REQUEST FOR ADMISSION PAPERS

Any student who desires to apply for admission should use the form shown below, or a personal letter, to request the necessary admission papers. An official application blank and other papers will be forwarded by return mail.

For any information not covered in the catalog, correspondence and personal conferences are cordially welcomed. Such correspondence should be addressed to the Registrar, Chipola Junior College, Marianna, Florida.

Registrar
Chipola Junior College
Marianna, Florida

Dear Sir:

Please send the necessary admission papers to:

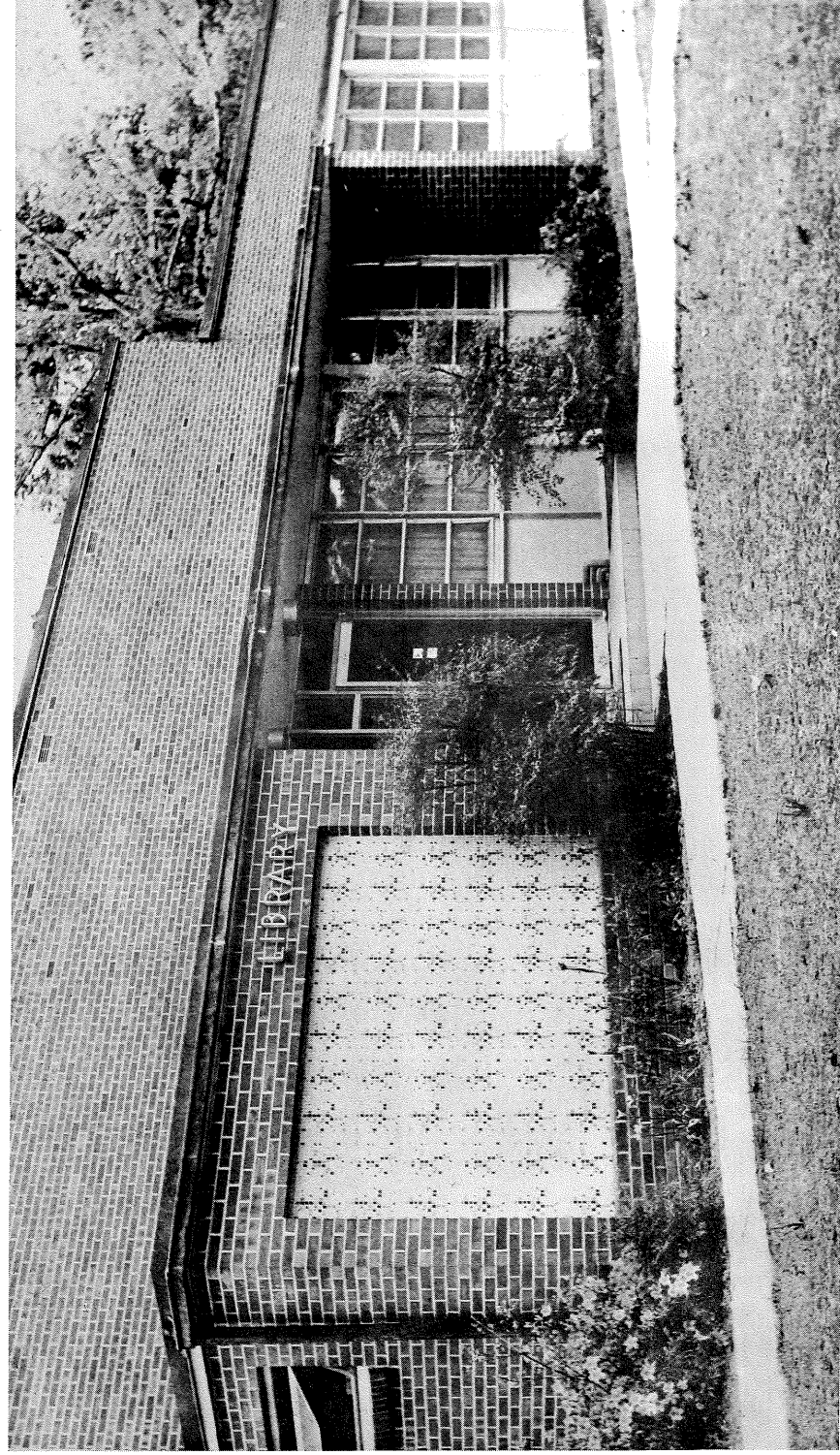
Name _____
(First) (Middle) (Last)

Mailing Address _____

I was graduated from _____ High School in 19____
I (have) (have not) previously attended another college or university.

I expect to enroll for the _____ Semester or Session, 19____.

Date _____ Signed _____



CHIPOLA LIBRARY

F/a

12,192-65

R

LD6501

C45c

1964-65

c2

CHIPOLA JUNIOR COLLEGE LIBRARY



3 3501 01014707 0

65

