

This Associate in Arts degree program includes courses required for those students who expect to transfer and earn a degree in Animal Science at the University of Florida with a specialization in animal biology or animal industry in the College of Agriculture.

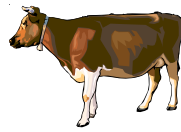
This is the best pre-professional preparation for veterinary school.

For additional program information, visit the [UF website](#).

Possible career options in animal science include various aspects of livestock production, livestock processing and utilization, allied service industries (feed, healthcare, genetics, equipment, supplies, marketing, promotion, finance, and education), and preparation for veterinary school. For more information please visit [The Occupational Outlook Handbook website](#).

The courses listed on this guide are not to be construed as a contract between the student and Chipola or the University. Course requirements may change each year. You are encouraged to work closely with your advisor.

Associate in Arts Degree



Animal Science

Transfer Institution: University of Florida

Code
1145

Program Length
60 credits

2006-2007

For more information
Contact:

Student Services
Chipola College
(850) 718-2266



Entrance Requirements

The University of Florida will deny admission to any student who has not satisfied the state foreign language admissions requirement.

Admission Deadlines: Check UF website.

All students entering UF are required to possess a personal computer. Check this UF website (<http://www.circa.ufl.edu/computers/>) for a link to specific computer hardware and software configurations for this major.

Courses in **BOLD** are critical tracking courses for this major at UF. Animal Industry Specialization majors should also take MCB 2010 & 2010L.

FRESHMAN YEAR

1st Semester		Sem. Hrs.	2nd Semester		Sem. Hrs.
ENC 1101	Communication Skills I	4	ENC 1102	Communication Skills II	4
CHM 1045 & 1045L	General Chemistry I & Lab	4	CHM 1046 & 1046L	General Chemistry II & Lab	4
MAC 1140	Precalculus Algebra	3	MAC 1311	Calculus & Analytic Geometry	5
MAC 1114	Trigonometry	3	SPC 2600	Effective Public Speaking	3
SLS 1101	Orientation	1			
TOTAL		15	TOTAL		16

SOPHOMORE YEAR

1st Semester		Sem. Hrs.	2nd Semester		Sem. Hrs.
XXX XXXX ¹	GORDON RULE WRITING	4	XXX XXXX	HUMANITIES	3
XXX XXXX	SOCIAL SCIENCE	3	ECO 2023	Microeconomics	3
BSC 2010 & 2010L	Integrated Prin of Biology I & Lab	4	BSC 2011 & 2011L	Integrated Prin. of Biology II & Lab	4
CHM 2210 & 2210L	Organic Chemistry I & Lab	5	CHM 2211 & 2211L	Organic Chemistry II & Lab	4
TOTAL		16	TOTAL		14

¹ Choose 4 hours from the following: AML 2010, AML 2020, ENL 2012, ENL 2022, ENC 1133, HUM 2216, HUM 2233, or SPT 2521.